

TASMANIAN STATISTICAL INDICATORS

EMBARGO: 11:30AM (CANBERRA TIME) THURS 8 FEB 2001

CONTENTS

| | <i>page</i> |
|---|-------------|
| Notes | 2 |
| Main features | 3 |
| List of tables | 8 |
| | |
| SUBJECT AREAS | |
| 1 Population and demography | 9 |
| 2 Labour force | 10 |
| 3 Wages and prices | 18 |
| 4 Production | 24 |
| 5 Primary industry | 25 |
| 6 Building | 29 |
| 7 Finance | 30 |
| 8 Tourism | 32 |
| 9 Transport | 34 |
| 10 Retail trade | 35 |
| 11 Overseas trade | 36 |
| 12 Australia and State comparisons | 38 |
| 13 Tasmanian Statistical Divisions comparisons | 40 |
| | |
| ADDITIONAL INFORMATION | |
| Map: Tasmanian Statistical Divisions | 42 |

- For further information about these and related statistics, contact the National Information Service on 1300 135 070 or Jackie Saarinen on Hobart 03 6222 5812.

NOTES

FORTHCOMING ISSUES

| <i>ISSUE</i> | <i>RELEASE DATE</i> |
|--------------|---------------------|
| March 2001 | 8 March 2001 |
| April 2001 | 10 April 2001 |

INTRODUCTION

1 This publication contains latest figures for a comprehensive range of economic indicators. Statistics shown in this publication are the latest available at the date of preparation and may be subject to revision in subsequent issues. Reference should therefore always be made to the latest issue or to the statistical publication on the specific subject.

SEASONAL ADJUSTMENT AND TREND ESTIMATION

2 Seasonal adjustment is a means of removing the estimated effects of normal seasonal variation from the series so that the effects of other influences on the series can be more clearly recognised. Seasonal adjustment does not aim to remove the irregular or non-seasonal influences which may be present in any particular month. This means that month-to-month movements of the seasonally adjusted estimates may not be reliable indicators of trend behaviour.

3 The smoothing of seasonally adjusted series reduces the impact of the irregular components of the seasonally adjusted series and creates trend estimates. These trend estimates are derived by applying a 13-term Henderson-weighted moving average to all months except the last six. The last six monthly trend estimates are obtained by applying surrogates of the Henderson average to the seasonally adjusted series.

4 While this smoothing technique enables estimates to be produced for the latest month, it does result in revisions to the most recent months as additional observations become available. Generally, subsequent revisions become smaller and after 3 months have a negligible impact on the series.

5 ABS statistical series are being impacted by varying degrees as a result of The New Tax System (TNTS), introduced in Australia from 1 July 2000. TNTS includes the removal of Wholesale Sales Tax and the introduction of a Goods and Service Tax (GST), and as a result, a number of ABS data series will reflect significant and subsequent impacts. Further information can be found in *ABS Statistics and The New Tax System* (Cat. no. 1358.0).

SYMBOLS AND OTHER USAGES

| | |
|--------|--|
| n.a. | not available |
| n.p. | not available for separate publication (but included in totals where applicable) |
| n.y.a. | not yet available |
| .. | not applicable |
| — | nil or rounded to zero |
| p | preliminary—figure or series subject to revision |
| r | figure or series revised since previous issue |

Stevan R. Matheson
Regional Director, Tasmania

MAIN FEATURES

THE LABOUR FORCE

Trend estimates There were an estimated 222,200 persons (based on *trend* estimates) in the labour force in December 2000 and an estimated 371,800 civilian Tasmanians aged 15 years or more, yielding a labour force participation rate of 59.8%. This compares with 59.0% in December 1999. The Australian labour force participation rate for December 2000 was 63.5%. This compares with 63.3% in December 1999 (see table 39 and *Labour Force, Australia, Preliminary* (Cat. no. 6202.0)).

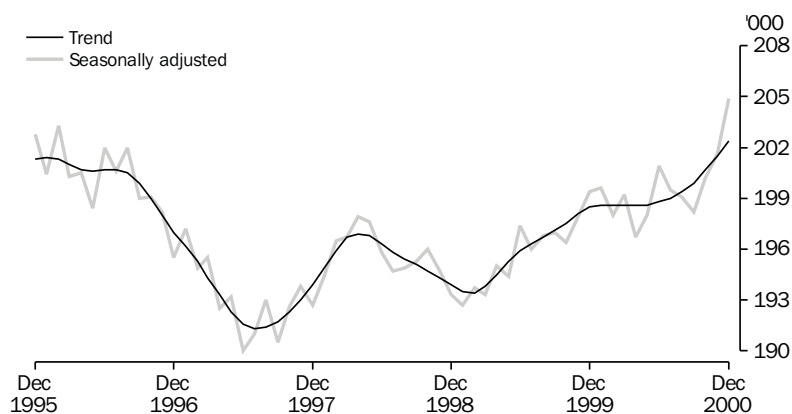
For Tasmanian males, the *trend* estimate of the participation rate was 68.9%, compared with 67.8% in December 1999. For Tasmanian females, the *trend* estimate of the participation rate was 51.2%, compared with 50.7% in December 1999 (see table 3).

EMPLOYMENT

State comparisons There was an increase of 2.0% in Tasmania's employment over the 12 months to December 2000. The largest percentage increase in employment was in Victoria (3.5%). New South Wales recorded an increase of 1.8%; Queensland, 1.7%; Western Australia, 1.2%; and South Australia, 0.1%. The increase in Australia's employment over the same period was 2.0% (see table 39 and *Labour Force, Australia, Preliminary* (Cat. no. 6202.0)).

Trend estimates

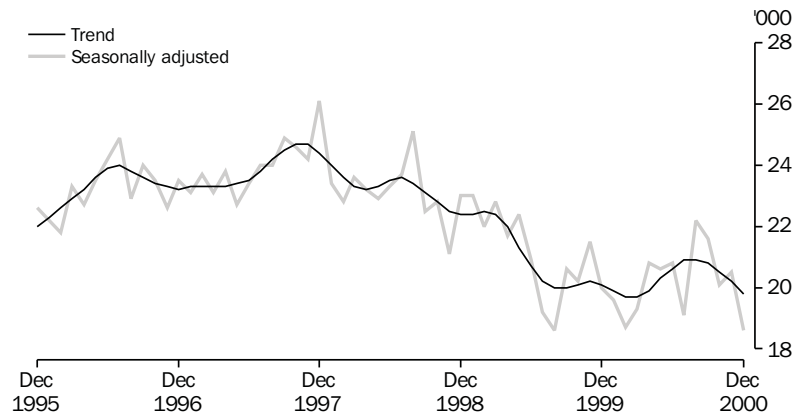
EMPLOYMENT



UNEMPLOYMENT

Trend estimates The *trend* estimate of the number of unemployed persons in Tasmania for December 2000 was 19,800. This compares with 20,100 in December 1999. The *trend* estimate of the unemployment rate of 8.9% in December 2000 compares with 9.2% in December 1999. The Australian *trend* estimate of the unemployment rate of 6.5% in December 2000 compares with 6.9% in December 1999 (see table 3 and 39, and *Labour Force, Australia, Preliminary* (Cat. no. 6202.0)).

UNEMPLOYMENT



LIVESTOCK SLAUGHTERING

Trend estimates Monthly movements of *trend* estimates showed decreases in all three livestock slaughtering series with cattle and calves down by 1.8%, sheep and lambs down by 7.2% and pigs down by 2.5%.

In November 2000, the *trend* estimate of the number of cattle and calves slaughtered was 17,600. This was down 24.1% on the number for November 1999, and down 21.1% on the number for November 1998.

The *trend* estimate for the slaughtering of sheep and lambs was 68,400 in November 2000. This was down by 19.3% on the number for November 1999, and down 9.6% on the number for November 1998.

The *trend* estimate of 4,560 pigs slaughtered in November 2000 was 21.3% less than for November 1999 and 28.9% less than the trend estimate for November 1998 (See table 21).

BUILDING APPROVALS

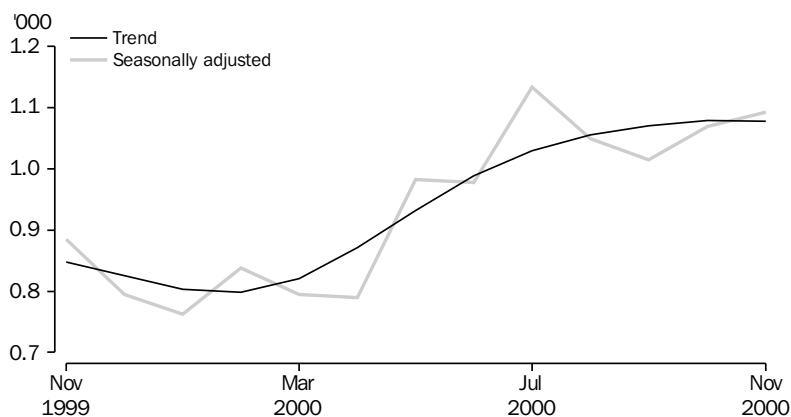
Original terms There were 116 dwelling units approved during November 2000, with 112 new houses, and 4 new other residential buildings. The number of dwelling units approved during November compared with 121 for October 2000 and 183 in November 1999.

At current prices, the value of total building was \$28.8 million in November 2000, 6.2% below the October 2000 figure of \$30.7 million and 11.6% above the November 1999 figure of \$25.8 million. Residential building contributed \$15.7 million and non-residential building \$13.1 million in November 2000 (see table 27 and Building Approvals, Australia (Cat. no. 8731.0)).

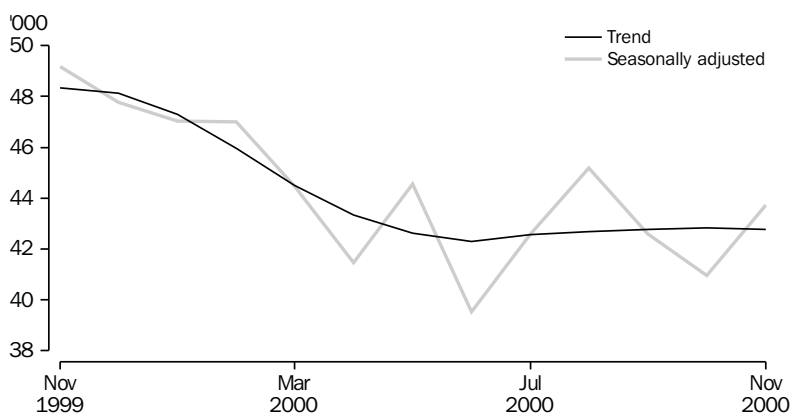
HOUSING FINANCE

Trend estimates The latest trend series for the number of housing finance commitments in Tasmania shows a decrease of 0.1% from October 2000 to November 2000, ending eight months of increases. The trend series does however show an increase of 27.1% between November 1999 and November 2000. The national trend series shows a decrease of 0.1% between October 2000 and November 2000, and an 11.5% decrease between November 1999 and November 2000.

HOUSING FINANCE, TASMANIA, Number of dwellings



HOUSING FINANCE, AUSTRALIA, Number of dwellings



The latest trend series for the total value of commitments for Tasmania continues to plateau, not moving between September 2000 and November 2000. However, the series shows a 17.6% increase between November 1999 and November 2000. The national trend series shows the value of commitments having decreased 1.7% between September 2000 and November 2000 as well as declining 19.7% between November 1999 and November 2000 (see table 28 and *Housing Finance for Owner Occupation, Australia* (Cat. no. 5609.0)).

NEW MOTOR VEHICLE REGISTRATIONS

Original terms There were 1,436 new motor vehicles (excluding motorcycles) registered in Tasmania during November 2000. This was 15.7% above the 1,241 registered in October 2000 and 14.3% above the November 1999 figure of 1,256. Of the new motor vehicles (excluding motorcycle) registered in November 2000, there were 173 vehicles registered by vehicle rental businesses, compared with 213 in October 2000 and 151 in November 1999 (see table 34).

RETAIL

Original terms In original terms, the estimate of retail turnover in Australia for November 2000 was \$13,182.2 million, 4.6% above the figure recorded in November 1999. In original terms, the estimate of retail turnover in Tasmania for November 2000 was \$294.1 million, 5.4% above the figure for November 1999.

Seasonally adjusted terms In *seasonally adjusted* terms, the estimate of retail turnover in Australia for November 2000 was \$12,665.3 million, 3.0% above the figure recorded in November 1999. In *seasonally adjusted* terms, the estimate of retail turnover in Tasmania for November 2000 was \$280.8 million, 3.2% above the figure recorded in November 1999. Tasmania recorded an increase in seasonally adjusted terms for the fourth month in a row. For November 2000 the largest increase in Tasmania was recorded in Clothing and soft good retailing (see table 35 and *Retail Trade, Australia* (Cat. no. 8501.0)).

OVERSEAS TRADE

The value of Tasmania's exports for the month of November 2000 was \$281 million, an increase of 43% over the month of October. Australia's exports for November totalled \$10,499 million, a decrease of 1% over the October figure.

Tasmania's major export destinations for the month of November were Japan (\$43.8 million), Taiwan (\$24.7 million) and Hong Kong (\$21.1 million). Major commodity groups exported for the month were road vehicles and transport equipment (\$89.0 million), non-ferrous metals (\$74.0 million), and fish, crustaceans and molluses (\$15.8 million).

LIST OF TABLES

| | | |
|-----------|---|----|
| 1 | Population | 9 |
| 2 | Births, deaths and marriages | 9 |
| 3 | Labour force status | 10 |
| 4 | Labour force status by region, males | 11 |
| 5 | Labour force status by region, females | 12 |
| 6 | Labour force status by region, persons | 13 |
| 7 | Teenage labour market | 14 |
| 8 | All employed persons by occupation | 15 |
| 9 | Employed wage and salary earners, sector and industry | 16 |
| 10 | Average hours worked | 16 |
| 11 | Job vacancies | 17 |
| 12 | Industrial disputes | 17 |
| 13 | Average weekly earnings of employees | 18 |
| 14 | Indexes of total hourly rates of pay | 19 |
| 15 | Summary of annual movements in wages and prices | 20 |
| 16 | House price index numbers, Hobart | 20 |
| 17 | Consumer price index, Hobart and eight capital cities combined | 21 |
| 18 | Price index of materials used in building other than house building, Hobart | 22 |
| 19 | Production of selected commodities | 24 |
| 20 | Livestock slaughtering: original | 25 |
| 21 | Livestock slaughtering: seasonally adjusted and trend | 25 |
| 22 | Meat production | 26 |
| 23 | Principal mineral concentrates produced | 26 |
| 24 | Sawmills and plywood mills, logs delivered and timber produced | 27 |
| 25 | Chipping and grinding of wood | 28 |
| 26 | Logs delivered for milling or chipping | 28 |
| 27 | Building approvals | 29 |
| 28 | Secured housing commitments | 30 |
| 29 | Private new capital expenditure by type of asset | 30 |
| 30 | Banking statistics | 31 |
| 31 | Accommodation establishments | 32 |
| 32 | National Parks, person entries | 33 |
| 33 | Tracks in National Parks, walker registrations | 33 |
| 34 | Registrations of new motor vehicles | 34 |
| 35 | Turnover of retail establishments at current prices | 35 |
| 36 | Value of overseas trade—Tasmania and Australia | 36 |
| 37 | Merchandise exports by selected countries and country groups | 36 |
| 38 | Merchandise exports by selected commodity groups | 37 |
| 39 | Major Statistical Indicators—Australia and State comparisons | 38 |
| 40 | Major Statistical Indicators—Tasmanian Statistical Divisions | 40 |

1

POPULATION

| | <i>Estimated resident population</i> | <i>Natural increase(a)</i> | <i>Net estimated migration gain</i> | <i>Total population growth</i> | <i>Annual growth rate(b)</i> |
|------------------|--------------------------------------|----------------------------|-------------------------------------|--------------------------------|------------------------------|
| | '000 | '000 | '000 | '000 | % |
| 1997-98 | 471.7 | 2.1 | -3.9 | -1.8 | -0.38 |
| 1998-99 | 470.8 | 2.7 | -3.6 | -0.9 | -0.19 |
| 1999-2000 | 470.4 | 2.2 | -2.6 | -0.4 | -0.09 |
| 1998 | | | | | |
| June qtr | 471.7 | 0.5 | -1.1 | -0.6 | -0.38 |
| September qtr | 471.6 | 0.6 | -0.7 | -0.1 | -0.30 |
| December qtr | 471.6 | 0.7 | -0.7 | -0.1 | -0.23 |
| 1999 | | | | | |
| March qtr | 471.1 | 0.7 | -1.2 | -0.5 | -0.26 |
| June qtr | 470.8 | 0.7 | -1.0 | -0.3 | -0.19 |
| September qtr p | 470.8 | 0.5 | -0.5 | 0 | -0.17 |
| December qtr p | 470.7 | 0.5 | -0.5 | -0.1 | -0.17 |
| 2000 | | | | | |
| March qtr p | 470.6 | 0.6 | -0.8 | -0.1 | -0.09 |
| June qtr p | 470.4 | 0.5 | -0.8 | -0.3 | -0.09 |

(a) Excess of live births registered over deaths registered (based on usual State of residence).

(b) Percentage growth from same quarter in previous year.

Source: Australian Demographic Statistics (Cat. no. 3101.0).

2

BIRTHS, DEATHS AND MARRIAGES(a)

| | <i>Births</i> | | <i>Deaths</i> | | <i>Infant mortality(b)</i> | | <i>Marriages</i> | |
|------------------|---------------|----------------|---------------|----------------|----------------------------|----------------|------------------|----------------|
| | <i>no.</i> | <i>rate(c)</i> | <i>no.</i> | <i>rate(d)</i> | <i>no.</i> | <i>rate(e)</i> | <i>no.</i> | <i>rate(f)</i> |
| 1997-98 | 5 870 | 1.76 | 3 766 | 6.6 | 38 | 6.5 | 2 782 | 5.9 |
| 1998-99 | 6 384 | 1.95 | 3 726 | 6.2 | 41 | 6.4 | 2 483 | r 5.3 |
| 1999-2000 | 5 844 | 1.82 | 3 683 | 6.2 | 40 | 6.8 | 2 648 | 5.6 |
| 1998 | | | | | | | | |
| June qtr | 1 420 | .. | 921 | .. | 11 | 7.8 | 810 | .. |
| September qtr | 1 636 | .. | 1 031 | .. | 9 | 5.5 | 331 | .. |
| December qtr | 1 567 | .. | 907 | .. | 8 | 5.1 | 658 | .. |
| 1999 | | | | | | | | |
| March qtr | 1 545 | .. | 865 | .. | 9 | 5.8 | 858 | .. |
| June qtr | 1 636 | .. | 923 | .. | 15 | 9.2 | 636 | .. |
| September qtr p | 1 555 | .. | 1 035 | .. | 16 | 10.3 | 327 | .. |
| December qtr p | 1 367 | .. | 905 | .. | 9 | 6.6 | 678 | .. |
| 2000 | | | | | | | | |
| March qtr p | 1 512 | .. | 864 | .. | 7 | 4.6 | 910 | .. |
| June qtr p | 1 410 | .. | 879 | .. | 8 | 5.7 | 733 | .. |

(a) Usual residents of Tasmania.

(b) Deaths of children under one year of age.

(c) Total fertility rate. The sum of age specific fertility rates (live births at each age of a mother per female population of that age). It represents the number of children a woman would bear during her lifetime if she experienced age-specific fertility rates at each age of her reproductive life.

(d) Standardised death rate. The overall death rate, per 1,000 persons, that would have prevailed in a standard population if it had experienced at each age the death rates of the population being studied. The standard population used in these calculations is all persons in the 1991 Australian population.

(e) Rate per 1,000 live births.

(f) Crude marriage rate is the number of marriages registered during the financial year, per 1,000 estimated resident population at 31 December of that year.

Source: Australian Demographic Statistics (Cat. no. 3101.0).

3

LABOUR FORCE STATUS(a) — SEASONALLY ADJUSTED AND TREND

| | Seasonally adjusted series(b) | | | | Trend series(b) | | | |
|-------------|-------------------------------|------------|-------------------|--------------------|-----------------|------------|-------------------|--------------------|
| | Employed | Unemployed | Unemployment rate | Participation rate | Employed | Unemployed | Unemployment rate | Participation rate |
| | '000 | '000 | % | % | '000 | '000 | % | % |
| MALES | | | | | | | | |
| 1999 | | | | | | | | |
| December | 110.5 | 12.4 | 10.1 | 68.2 | 109.9 | 12.2 | 10.0 | 67.8 |
| 2000 | | | | | | | | |
| January | 109.8 | 11.8 | 9.7 | 67.5 | 109.7 | 11.9 | 9.7 | 67.5 |
| February | 109.7 | 10.9 | 9.1 | 66.9 | 109.5 | 11.5 | 9.5 | 67.2 |
| March | 109.3 | 11.0 | 9.1 | 66.7 | 109.3 | 11.4 | 9.5 | 67.0 |
| April | 108.5 | 11.6 | 9.7 | 66.6 | 109.4 | 11.6 | 9.6 | 67.1 |
| May | 109.3 | 11.9 | 9.8 | 67.2 | 109.5 | 12.0 | 9.9 | 67.4 |
| June | 110.2 | 13.6 | 11.0 | 68.6 | 109.8 | 12.5 | 10.2 | 67.8 |
| July | 110.8 | 11.6 | 9.5 | 67.8 | 110.1 | 12.8 | 10.4 | 68.1 |
| August | 110.5 | 13.6 | 11.0 | 68.7 | 110.5 | 12.9 | 10.4 | 68.3 |
| September | 110.6 | 13.0 | 10.5 | 68.4 | 110.9 | 12.8 | 10.4 | 68.5 |
| October | 110.5 | 12.7 | 10.3 | 68.2 | 111.4 | 12.7 | 10.2 | 68.6 |
| November | 112.1 | 12.3 | 9.9 | 68.8 | 111.8 | 12.5 | 10.0 | 68.8 |
| December | 113.3 | 11.8 | 9.4 | 69.2 | 112.3 | 12.2 | 9.8 | 68.9 |
| FEMALES | | | | | | | | |
| 1999 | | | | | | | | |
| December | 88.9 | 7.6 | 7.9 | 50.8 | 88.5 | 7.8 | 8.1 | 50.7 |
| 2000 | | | | | | | | |
| January | 89.8 | 7.9 | 8.1 | 51.4 | 88.9 | 8.0 | 8.3 | 51.0 |
| February | 88.3 | 7.8 | 8.1 | 50.6 | 89.1 | 8.2 | 8.4 | 51.2 |
| March | 89.9 | 8.3 | 8.5 | 51.7 | 89.2 | 8.3 | 8.5 | 51.3 |
| April | 88.2 | 9.2 | 9.4 | 51.2 | 89.2 | 8.3 | 8.5 | 51.3 |
| May | 88.7 | 8.6 | 8.9 | 51.2 | 89.1 | 8.3 | 8.5 | 51.2 |
| June | 90.7 | 7.2 | 7.4 | 51.4 | 89.0 | 8.2 | 8.4 | 51.0 |
| July | 88.6 | 7.5 | 7.8 | 50.5 | 88.9 | 8.1 | 8.4 | 50.9 |
| August | 88.7 | 8.6 | 8.8 | 51.1 | 88.8 | 8.0 | 8.3 | 50.8 |
| September | 87.6 | 8.6 | 8.9 | 50.4 | 89.0 | 7.9 | 8.2 | 50.9 |
| October | 89.7 | 7.4 | 7.6 | 50.9 | 89.3 | 7.9 | 8.1 | 50.9 |
| November | 89.5 | 8.2 | 8.4 | 51.2 | 89.7 | 7.7 | 7.9 | 51.1 |
| December | 91.6 | 6.8 | 6.9 | 51.5 | 90.1 | 7.6 | 7.8 | 51.2 |
| TOTAL | | | | | | | | |
| 1999 | | | | | | | | |
| December | 199.4 | 20.0 | 9.1 | 59.3 | 198.5 | 20.1 | 9.2 | 59.0 |
| 2000 | | | | | | | | |
| January | 199.6 | 19.6 | 9.0 | 59.2 | 198.6 | 19.9 | 9.1 | 59.0 |
| February | 198.0 | 18.7 | 8.6 | 58.5 | 198.6 | 19.7 | 9.0 | 59.0 |
| March | 199.2 | 19.3 | 8.9 | 59.0 | 198.6 | 19.7 | 9.0 | 58.9 |
| April | 196.7 | 20.8 | 9.6 | 58.7 | 198.6 | 19.9 | 9.1 | 59.0 |
| May | 198.0 | 20.6 | 9.4 | 59.0 | 198.6 | 20.3 | 9.3 | 59.1 |
| June | 200.9 | 20.8 | 9.4 | 59.8 | 198.8 | 20.6 | 9.4 | 59.2 |
| July | 199.5 | 19.1 | 8.7 | 58.9 | 199.0 | 20.9 | 9.5 | 59.3 |
| August | 199.1 | 22.2 | 10.0 | 59.6 | 199.4 | 20.9 | 9.5 | 59.4 |
| September | 198.2 | 21.6 | 9.8 | 59.2 | 199.9 | 20.8 | 9.4 | 59.4 |
| October | 200.2 | 20.1 | 9.1 | 59.3 | 200.7 | 20.5 | 9.3 | 59.5 |
| November | 201.6 | 20.5 | 9.2 | 59.8 | 201.5 | 20.2 | 9.1 | 59.7 |
| December | 204.9 | 18.6 | 8.3 | 60.1 | 202.4 | 19.8 | 8.9 | 59.8 |

(a) For explanation of terms and concepts, refer to Labour Force, Australia, Preliminary (Cat. no. 6202.0).

(b) Seasonal factors are reviewed annually to take account of each additional year's data. The results of the review are used to compile revised seasonally adjusted and trend estimates each February. Trend estimates for the most recent months are also revised each month; see Notes on page 2.

Source: Labour Force, Australia, Preliminary (Cat. no. 6202.0).

4

LABOUR FORCE STATUS BY REGION — MALES(a)(b)

| | <i>Total employed</i> | <i>Total unemployed</i> | <i>Unemployment rate</i> | <i>Participation rate</i> |
|---|-----------------------|-------------------------|--------------------------|---------------------------|
| | '000 | '000 | % | % |
| HOBART AND SOUTHERN STATISTICAL DIVISIONS | | | | |
| 1997 | | | | |
| December | 50.3 | 7.7 | 13.3 | 69.8 |
| 1999 | | | | |
| December | 54.1 | 6.4 | 10.6 | 68.2 |
| 2000 | | | | |
| October | 50.5 | 6.4 | 11.2 | 65.1 |
| November | 51.7 | 6.8 | 11.7 | 66.9 |
| December | 53.4 | 6.5 | 10.9 | 68.5 |
| NORTHERN STATISTICAL DIVISION | | | | |
| 1997 | | | | |
| December | 31.0 | 5.6 | 15.2 | 71.2 |
| 1999 | | | | |
| December | 32.3 | 3.2 | 9.1 | 70.0 |
| 2000 | | | | |
| October | 35.6 | 2.9 | 7.6 | 72.9 |
| November | 36.2 | 2.7 | 6.9 | 73.2 |
| December | 37.1 | 2.8 | 6.9 | 74.1 |
| MERSEY-LYELL STATISTICAL DIVISION | | | | |
| 1997 | | | | |
| December | 28.9 | 5.2 | 15.3 | 74.0 |
| 1999 | | | | |
| December | 25.6 | 3.5 | 11.9 | 71.4 |
| 2000 | | | | |
| October | 23.9 | 3.0 | 11.1 | 66.3 |
| November | 23.4 | 2.5 | 9.6 | 64.5 |
| December | 24.4 | 3.2 | 11.5 | 69.6 |
| TASMANIA | | | | |
| 1997 | | | | |
| December | 110.1 | 18.5 | 14.4 | 71.3 |
| 1999 | | | | |
| December | 111.9 | 13.1 | 10.5 | 69.4 |
| 2000 | | | | |
| October | 109.9 | 12.3 | 10.1 | 67.6 |
| November | 111.3 | 12.0 | 9.7 | 68.2 |
| December | 114.8 | 12.4 | 9.8 | 70.4 |

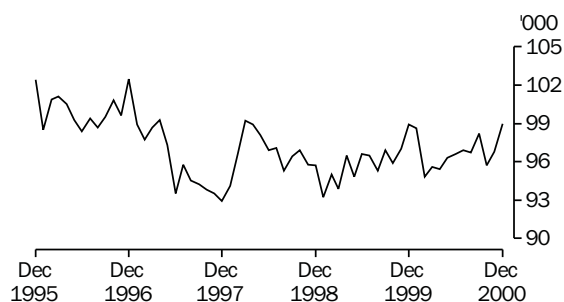
(a) For explanation of terms and concepts, refer to Labour Force, Australia (Cat. no. 6203.0).

(b) Data in this table are original series, i.e. they are not part of a seasonally adjusted or a trend series. Accordingly, care should be exercised when using these data.

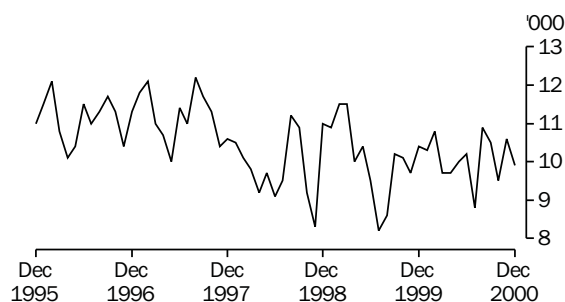
Source: Labour Force, Selected Summary Tables, Australia (Cat. no. 6291.0.40.001).

Hobart and Southern Statistical Divisions—Persons (see table 6)

EMPLOYMENT



UNEMPLOYMENT



5

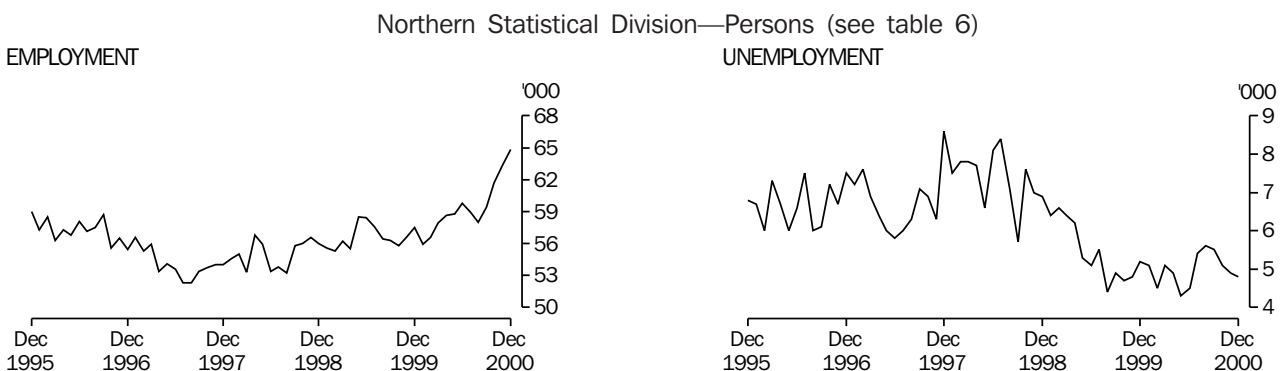
LABOUR FORCE STATUS BY REGION — FEMALES(a)(b)

| | <i>Total employed</i> | <i>Total unemployed</i> | <i>Unemployment rate</i> | <i>Participation rate</i> |
|--|-----------------------|-------------------------|--------------------------|---------------------------|
| | '000 | '000 | % | % |
| HOBART AND SOUTHERN STATISTICAL DIVISIONS | | | | |
| 1997 | | | | |
| December | 42.7 | 2.9 | 6.4 | 51.5 |
| 1999 | | | | |
| December | 44.8 | 4.0 | 8.2 | 52.0 |
| 2000 | | | | |
| October | 45.1 | 3.1 | 6.4 | 52.1 |
| November | 45.1 | 3.8 | 7.7 | 52.5 |
| December | 45.7 | 3.3 | 6.8 | 52.6 |
| NORTHERN STATISTICAL DIVISION | | | | |
| 1997 | | | | |
| December | 22.9 | 3.1 | 11.8 | 49.0 |
| 1999 | | | | |
| December | 25.2 | 2.0 | 7.2 | 49.7 |
| 2000 | | | | |
| October | 26.2 | 2.1 | 7.6 | 50.9 |
| November | 27.1 | 2.2 | 7.5 | 51.8 |
| December | 27.7 | 2.0 | 6.8 | 53.2 |
| MERSEY-LYELL STATISTICAL DIVISION | | | | |
| 1997 | | | | |
| December | 19.0 | 3.2 | 14.2 | 46.8 |
| 1999 | | | | |
| December | 19.5 | 1.9 | 8.8 | 52.0 |
| 2000 | | | | |
| October | 17.9 | 2.7 | 13.0 | 48.3 |
| November | 17.7 | 2.1 | 10.5 | 48.0 |
| December | 18.8 | 1.7 | 8.2 | 49.0 |
| TASMANIA | | | | |
| 1997 | | | | |
| December | 84.7 | 9.2 | 9.8 | 49.6 |
| 1999 | | | | |
| December | 89.6 | 7.9 | 8.1 | 51.3 |
| 2000 | | | | |
| October | 89.2 | 7.9 | 8.1 | 50.9 |
| November | 89.9 | 8.1 | 8.2 | 51.3 |
| December | 92.2 | 7.0 | 7.1 | 52.0 |

(a) For explanation of terms and concepts, refer to Labour Force, Australia (Cat. no. 6203.0).

(b) Data in this table are original series, i.e. they are not part of a seasonally adjusted or a trend series. Accordingly, care should be exercised when using these data.

Source: Labour Force, Selected Summary Tables, Australia (Cat. no. 6291.0.40.001).



6

LABOUR FORCE STATUS BY REGION — PERSONS(a)(b)

| | Total employed | Total unemployed | Unemployment rate | Participation rate |
|---|----------------|------------------|-------------------|--------------------|
| | '000 | '000 | % | % |
| HOBART AND SOUTHERN STATISTICAL DIVISIONS | | | | |
| 1997 | | | | |
| December | 92.9 | 10.6 | 10.3 | 60.3 |
| 1999 | | | | |
| December | 98.9 | 10.4 | 9.6 | 59.9 |
| 2000 | | | | |
| October | 95.7 | 9.5 | 9.0 | 58.4 |
| November | 96.8 | 10.6 | 9.9 | 59.5 |
| December | 99.0 | 9.9 | 9.1 | 60.3 |
| NORTHERN STATISTICAL DIVISION | | | | |
| 1997 | | | | |
| December | 54.0 | 8.6 | 13.8 | 59.9 |
| 1999 | | | | |
| December | 57.5 | 5.2 | 8.3 | 59.4 |
| 2000 | | | | |
| October | 61.7 | 5.1 | 7.6 | 61.6 |
| November | 63.3 | 4.9 | 7.2 | 62.2 |
| December | 64.8 | 4.8 | 6.9 | 63.5 |
| MERSEY-LYELL STATISTICAL DIVISION | | | | |
| 1997 | | | | |
| December | 47.9 | 8.4 | 14.9 | 60.2 |
| 1999 | | | | |
| December | 45.1 | 5.3 | 10.6 | 61.6 |
| 2000 | | | | |
| October | 41.8 | 5.7 | 11.9 | 57.1 |
| November | 41.1 | 4.6 | 10.0 | 56.1 |
| December | 43.2 | 4.9 | 10.1 | 59.0 |
| TASMANIA | | | | |
| 1997 | | | | |
| December | 194.8 | 27.6 | 12.4 | 60.2 |
| 1999 | | | | |
| December | 201.5 | 21.0 | 9.4 | 60.1 |
| 2000 | | | | |
| October | 199.2 | 20.2 | 9.2 | 59.1 |
| November | 201.2 | 20.1 | 9.1 | 59.6 |
| December | 207.0 | 19.5 | 8.6 | 60.9 |

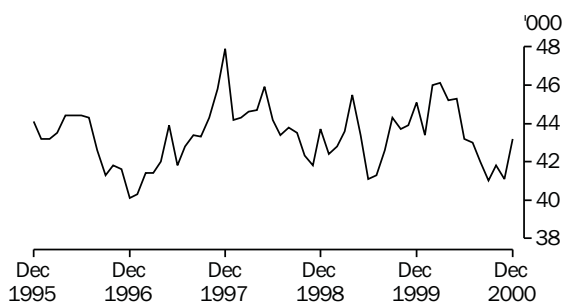
(a) For explanation of terms and concepts, refer to Labour Force, Australia (Cat. no. 6203.0).

(b) Data in this table are original series, i.e. they are not part of a seasonally adjusted or a trend series. Accordingly, care should be exercised when using these data.

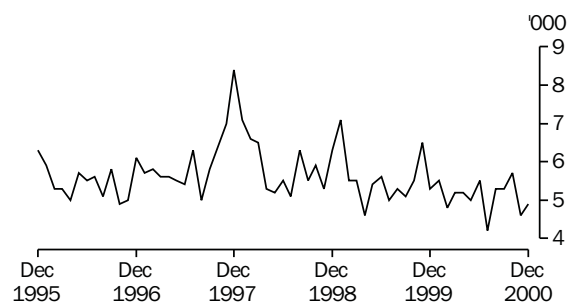
Source: Labour Force, Selected Summary Tables, Australia (Cat. no. 6291.0.40.001).

Mersey-Lyell Statistical Division—Persons (see table 6)

EMPLOYMENT



UNEMPLOYMENT



7

TEENAGE LABOUR MARKET(a)

| | <i>Employed</i> | | <i>Unemployed</i> | | <i>Labour force</i> | <i>Not in labour force</i> | <i>Civilian population aged 15–19</i> | <i>Unemployment rate</i> | <i>Unemployment population ratio</i> | <i>Participation rate</i> |
|--|------------------|--------------|-----------------------------------|--------------|---------------------|----------------------------|---------------------------------------|--------------------------|--------------------------------------|---------------------------|
| | <i>Full time</i> | <i>Total</i> | <i>Looking for full time work</i> | <i>Total</i> | | | | | | |
| | '000 | '000 | '000 | '000 | | | | | | |
| ATTENDING NEITHER A SCHOOL NOR A TERTIARY INSTITUTION FULL TIME | | | | | | | | | | |
| 1997 | | | | | | | | | | |
| December | 6.3 | 9.7 | 2.0 | 2.7 | 12.4 | 2.9 | 15.3 | 21.7 | 17.6 | 81.3 |
| 1999 | | | | | | | | | | |
| December | 6.1 | 9.6 | 2.8 | 3.2 | 12.9 | 2.8 | 15.7 | 25.2 | 20.7 | 82.2 |
| 2000 | | | | | | | | | | |
| October | 4.3 | 7.1 | 2.6 | 2.6 | 9.7 | 0.8 | 10.5 | 27.0 | 24.9 | 92.5 |
| November | 5.0 | 7.6 | 1.9 | 2.1 | 9.6 | 1.1 | 10.8 | 21.3 | 19.0 | 89.4 |
| December | 6.3 | 11.1 | 2.4 | 2.5 | 13.6 | 1.9 | 15.5 | 18.6 | 16.4 | 88.0 |
| ATTENDING SCHOOL OR A TERTIARY INSTITUTION FULL TIME | | | | | | | | | | |
| 1997 | | | | | | | | | | |
| December | 0.6 | 6.2 | 0.9 | 2.9 | 9.2 | 9.8 | 19.0 | 32.0 | 15.4 | 48.2 |
| 1999 | | | | | | | | | | |
| December | 0.6 | 6.7 | 0.4 | 2.1 | 8.8 | 10.4 | 19.2 | 23.7 | 10.8 | 45.8 |
| 2000 | | | | | | | | | | |
| October | 0.2 | 8.0 | 0.4 | 2.3 | 10.2 | 13.9 | 24.2 | 22.2 | 9.4 | 42.3 |
| November | 0.3 | 7.2 | 0.6 | 2.5 | 9.7 | 14.1 | 23.9 | 26.1 | 10.6 | 40.8 |
| December | 0.8 | 7.0 | 0.7 | 2.6 | 9.6 | 9.5 | 19.1 | 26.7 | 13.4 | 50.1 |
| TOTAL | | | | | | | | | | |
| 1997 | | | | | | | | | | |
| December | 6.9 | 15.9 | 2.9 | 5.6 | 21.6 | 12.7 | 34.3 | 26.1 | 16.4 | 63.0 |
| 1999 | | | | | | | | | | |
| December | 6.7 | 16.3 | 3.2 | 5.3 | 21.7 | 13.2 | 34.8 | 24.6 | 15.3 | 62.2 |
| 2000 | | | | | | | | | | |
| October | 4.5 | 15.1 | 3.0 | 4.9 | 20.0 | 14.7 | 34.7 | 24.5 | 14.1 | 57.5 |
| November | 5.3 | 14.8 | 2.5 | 4.6 | 19.4 | 15.3 | 34.7 | 23.7 | 13.2 | 55.9 |
| December | 7.1 | 18.1 | 3.1 | 5.1 | 23.2 | 11.4 | 34.6 | 21.9 | 14.7 | 67.1 |

(a) Persons aged 15–19 years. For explanation of terms and concepts, refer to Labour Force, Australia (Cat. no. 6203.0). Care should be exercised when using these series as some estimates are subject to high sampling variability.

Source: Unpublished data, Labour Force, Estimates; Labour Force, Teenage Employment and Unemployment, Australia, Preliminary, Data Report (Cat. no. 6202.0.40.001).

8

ALL EMPLOYED PERSONS BY OCCUPATION(a)

| | November 1999 | | | November 2000 | | | Proportion of total employed | |
|--|---------------|--------------|-------------|---------------|---------------|---------------|------------------------------|--|
| | Persons | Males | Females | Persons | November 1999 | November 2000 | | |
| | '000 | '000 | '000 | '000 | % | % | | |
| Managers and administrators | | | | | | | | |
| Generalist managers | 1.8 | 1.9 | 0.3 | 2.1 | 0.9 | 1.1 | | |
| Specialist managers | 4.3 | 2.3 | 0.4 | 2.7 | 2.2 | 1.3 | | |
| Farmers and farm managers | 7.5 | 4.8 | 2.3 | 7.0 | 3.8 | 3.5 | | |
| Total | 13.6 | 8.9 | 2.9 | 11.9 | 6.9 | 5.9 | | |
| Professionals | | | | | | | | |
| Science, building and engineering professionals | 3.3 | 3.0 | 0.3 | 3.3 | 1.7 | 1.6 | | |
| Business and information professionals | 4.1 | 3.9 | 2.1 | 6.0 | 2.1 | 3.0 | | |
| Health professionals | 7.9 | 2.2 | 7.1 | 9.3 | 4.0 | 4.6 | | |
| Education professionals | 11.4 | 4.1 | 6.0 | 10.2 | 5.8 | 5.1 | | |
| Social, arts and miscellaneous professionals | 5.3 | 3.6 | 2.9 | 6.5 | 2.7 | 3.2 | | |
| Total | 32.0 | 16.8 | 18.5 | 35.3 | 16.2 | 17.5 | | |
| Associate professionals | | | | | | | | |
| Science, engineering and related associate professionals | 2.5 | 2.1 | 0.4 | 2.5 | 1.3 | 1.3 | | |
| Business and administration associate professionals | 3.4 | 2.0 | 2.0 | 4.0 | 1.7 | 2.0 | | |
| Managing supervisors (sales and service) | 8.8 | 6.5 | 3.7 | 10.2 | 4.5 | 5.1 | | |
| Health and welfare associate professionals | 1.0 | 0.4 | 0.8 | 1.2 | 0.5 | 0.6 | | |
| Other associate professionals | 3.5 | 1.4 | 1.9 | 3.4 | 1.8 | 1.7 | | |
| Total | 18.2 | 12.1 | 8.0 | 20.1 | 9.2 | 10.0 | | |
| Tradespersons and related workers | | | | | | | | |
| Mechanical and fabrication engineering tradespersons | 5.0 | 5.5 | 0.1 | 5.5 | 2.5 | 2.8 | | |
| Automotive tradespersons | 3.3 | 2.6 | — | 2.6 | 1.7 | 1.3 | | |
| Electrical and electronics tradespersons | 4.9 | 4.4 | 0.1 | 4.5 | 2.5 | 2.2 | | |
| Construction tradespersons | 4.5 | 5.1 | — | 5.1 | 2.3 | 2.5 | | |
| Other tradespersons and related workers | 9.7 | 7.3 | 2.5 | 9.8 | 4.9 | 4.9 | | |
| Total | 27.4 | 24.8 | 2.7 | 27.5 | 13.9 | 13.7 | | |
| Advanced clerical and service workers | | | | | | | | |
| Secretaries and personal assistants | 2.8 | 0.2 | 2.4 | 2.6 | 1.4 | 1.3 | | |
| Other advanced clerical and service workers | 3.4 | 0.6 | 2.0 | 2.6 | 1.7 | 1.3 | | |
| Total | 6.1 | 0.8 | 4.4 | 5.2 | 3.1 | 2.6 | | |
| Intermediate clerical, sales and service workers | | | | | | | | |
| Intermediate clerical workers | 22.4 | 5.0 | 16.8 | 21.8 | 11.4 | 10.8 | | |
| Intermediate sales and related workers | 3.2 | 3.1 | 0.7 | 3.8 | 1.6 | 1.9 | | |
| Intermediate service workers | 14.1 | 3.3 | 10.2 | 13.5 | 7.2 | 6.7 | | |
| Total | 39.8 | 11.4 | 27.7 | 39.1 | 20.2 | 19.4 | | |
| Intermediate production and transport workers | | | | | | | | |
| Intermediate plant operators | 5.7 | 5.6 | 0.1 | 5.7 | 2.9 | 2.8 | | |
| Intermediate machine operators | 2.3 | 2.0 | 0.5 | 2.5 | 1.1 | 1.3 | | |
| Road and rail transport drivers | 6.7 | 5.8 | 0.4 | 6.2 | 3.4 | 3.1 | | |
| Other intermediate production and transport workers | 3.4 | 3.4 | 1.4 | 4.7 | 1.7 | 2.4 | | |
| Total | 18.1 | 16.7 | 2.4 | 19.1 | 9.2 | 9.5 | | |
| Elementary clerical, sales and service workers | | | | | | | | |
| Elementary clerks | 1.1 | 0.8 | 0.6 | 1.4 | 0.5 | 0.7 | | |
| Elementary sales workers | 15.6 | 6.1 | 13.4 | 19.5 | 7.9 | 9.7 | | |
| Elementary service workers | 2.3 | 1.5 | 1.0 | 2.5 | 1.2 | 1.2 | | |
| Total | 19.0 | 8.5 | 14.9 | 23.4 | 9.6 | 11.6 | | |
| Labourers and related workers | | | | | | | | |
| Cleaners | 5.6 | 1.6 | 3.0 | 4.6 | 2.8 | 2.3 | | |
| Factory labourers | 5.9 | 2.5 | 1.6 | 4.1 | 3.0 | 2.0 | | |
| Other labourers and related workers | 11.8 | 7.2 | 3.7 | 10.9 | 6.0 | 5.4 | | |
| Total | 23.2 | 11.3 | 8.3 | 19.6 | 11.8 | 9.8 | | |
| Total employed | 197.5 | 111.3 | 89.9 | 201.2 | 100.0 | 100.0 | | |

(a) For explanation of terms and concepts, refer to Labour Force, Australia (Cat. no. 6203.0).

Source: Unpublished data, Labour Force, Estimates.

9

WAGE AND SALARY EARNERS, SECTOR AND INDUSTRY(a)

| | Employees, May 2000 | | | Percentage distribution | |
|---|---------------------|-------------|--------------|-------------------------|--------------|
| | Private | Public | Total | May 1999 | May 2000 |
| | '000 | '000 | '000 | % | % |
| Agriculture, forestry & fishing | n.a. | 0.6 | 0.6 | 0.4 | 0.4 |
| Mining | 1.7 | — | 1.7 | 0.7 | 1.1 |
| Manufacturing | n.p. | n.p. | 20.4 | 14.0 | 12.9 |
| Electricity, gas & water, Construction | 4.0 | 1.9 | 5.9 | 4.3 | 3.7 |
| Wholesale & Retail trade | 34.2 | — | 34.2 | 22.8 | 21.7 |
| Accommodation, cafes & restaurants | 9.7 | — | 9.7 | 7.0 | 6.2 |
| Transport & storage | 5.5 | 0.8 | 6.3 | 3.5 | 4.0 |
| Communication services | n.p. | n.p. | 2.2 | 1.3 | 1.4 |
| Finance, insurance, Property & business services | 14.2 | 0.7 | 15.0 | 8.7 | 9.5 |
| Government administration and defence | — | 9.4 | 9.4 | 6.0 | 6.0 |
| Education | 3.6 | 14.4 | 18.0 | 11.0 | 11.4 |
| Health and community services | 14.2 | 8.6 | 22.9 | 14.3 | 14.5 |
| Cultural, recreational, Personal and other services | 8.3 | 3.1 | 11.4 | 6.0 | 7.2 |
| Total all industries | 116.2 | 41.5 | 157.7 | 100.0 | 100.0 |

(a) For explanation of terms and concepts, refer to Wage and Salary Earners, Australia (Cat. no. 6248.0).

Source: Wage and Salary Earners, Australia (Cat. no. 6248.0).

10

AVERAGE HOURS WORKED

| | Average weekly total hours worked, all employed persons(a) | | |
|-------------|--|---------|---------|
| | Males | Females | Persons |
| 1999 | | | |
| August | 39.2 | 28.1 | 34.3 |
| November | 39.8 | 27.2 | 34.1 |
| 2000 | | | |
| February | 37.1 | 24.7 | 31.6 |
| May | 38.9 | 28.1 | 34.1 |
| August | 38.1 | 26.7 | 33.0 |
| November | 39.5 | 27.6 | 34.2 |

(a) For explanation of terms and concepts, refer to Labour Force, Australia (Cat. no. 6203.0).

Source: Unpublished data.

11

JOB VACANCIES(a)(b)

| | <i>no.</i> | <i>rate(c)</i> |
|-------------|------------|----------------|
| | '000 | % |
| 1999 | | |
| August | 1.7 | 1.0 |
| November | 2.2 | 1.3 |
| 2000 | | |
| February | 1.7 | 1.0 |
| May | 1.3 | 0.8 |
| August | 2.5 | 1.5 |
| November | 1.9 | 1.1 |

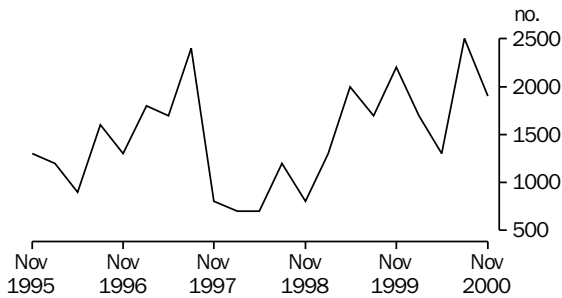
(a) For explanation of terms and concepts, refer to Job Vacancies, Australia (Cat. no. 6354.0).

(b) Care should be exercised in using these series as some estimates are subject to high sampling variability.

(c) Job vacancies expressed as a percentage of the number of employees plus job vacancies.

Source: *Job Vacancies, Australia (Cat.no. 6354.0)*.

JOB VACANCIES



12

INDUSTRIAL DISPUTES(a)

| | <i>Working days lost</i> | <i>Twelve months ended</i> | <i>Working days lost per thousand employees</i> |
|----------------------------|--------------------------|----------------------------|---|
| | '000 | <i>ended</i> | <i>no.</i> |
| 1999 | | 1999 | |
| September | — | September | 5 |
| October | — | October | 5 |
| November | — | November | 3 |
| December | — | December | 2 |
| 2000 | | 2000 | |
| January | 0.1 | January | 3 |
| February | — | February | 3 |
| March | 0.2 | March | 4 |
| April | 0.2 | April | 5 |
| May | 0.2 | May | 6 |
| June | 0.2 | June | 6 |
| July | — | July | 6 |
| August | — | August | 6 |
| September | — | September | 6 |
| Twelve months ended | | | |
| September 2000 | 1.0 | | |

(a) For explanation of terms and concepts, refer to Industrial Disputes, Australia (Cat. no. 6321.0).

Source: *Industrial Disputes, Australia (Cat.no. 6321.0)*.

AVERAGE WEEKLY EARNINGS OF EMPLOYEES(a) — ORIGINAL AND TREND

| | <i>Full time adult males</i> | <i>All males</i> | <i>Full time adult females</i> | <i>All females</i> | <i>Full time adult persons</i> | <i>All employees</i> | | | |
|-------------|--------------------------------------|------------------------------|--------------------------------|--------------------------------------|--------------------------------|------------------------------|--------------------------------------|------------------------------|------------------------------|
| | <i>Weekly ordinary time earnings</i> | <i>Weekly total earnings</i> | <i>Weekly total earnings</i> | <i>Weekly ordinary time earnings</i> | <i>Weekly total earnings</i> | <i>Weekly total earnings</i> | <i>Weekly ordinary time earnings</i> | <i>Weekly total earnings</i> | <i>Weekly total earnings</i> |
| | \$ | \$ | \$ | \$ | \$ | \$ | \$ | \$ | \$ |
| ORIGINAL | | | | | | | | | |
| 1999 | | | | | | | | | |
| May | 731.90 | 771.20 | 657.80 | 613.70 | 625.30 | 421.00 | 692.00 | 722.00 | 539.60 |
| August | 749.70 | 778.50 | 660.50 | 619.10 | 629.90 | 420.70 | 703.60 | 726.10 | 537.60 |
| November | 761.00 | 801.60 | 682.50 | 641.30 | 658.90 | 433.90 | 719.00 | 751.50 | 554.90 |
| 2000 | | | | | | | | | |
| February | 767.70 | 799.30 | 686.20 | 639.60 | 656.70 | 444.20 | 723.90 | 750.60 | 566.70 |
| May | 788.10 | 828.20 | 695.80 | 643.40 | 659.10 | 428.00 | 737.20 | 768.80 | 558.10 |
| August | 784.20 | 819.60 | 677.60 | 645.40 | 660.90 | 422.90 | 736.50 | 765.10 | 547.40 |
| TREND(b) | | | | | | | | | |
| 1999 | | | | | | | | | |
| May | 743.00 | 784.20 | 671.10 | 618.80 | 630.90 | 420.60 | 700.80 | 732.30 | 545.30 |
| August | 748.10 | 784.60 | 670.40 | 625.10 | 638.10 | 427.30 | 705.80 | 734.10 | 547.10 |
| November | 757.70 | 792.00 | 675.30 | 632.60 | 647.50 | 432.90 | 713.80 | 741.30 | 551.90 |
| 2000 | | | | | | | | | |
| February | 770.40 | 805.60 | 683.20 | 639.10 | 655.50 | 434.90 | 724.20 | 752.90 | 557.40 |
| May | 782.50 | 818.50 | 688.70 | 645.00 | 661.90 | 432.30 | 734.90 | 764.30 | 558.80 |
| August | 793.90 | 831.80 | 694.40 | 650.30 | 667.10 | 426.80 | 745.30 | 775.90 | 557.60 |

(a) For explanation of terms and concepts, refer to Average Weekly Earnings, States and Australia (Cat. no. 6302.0).

(b) ABS trend estimates for the most recent months are revised, see Notes on page 2.

Source: Average Weekly Earnings, States and Australia (Cat. no. 6302.0).

| | Index numbers | | | | Percentage change | | |
|--|-----------------|-----------------|------------------|-----------------|---------------------------------------|--|--|
| | Dec qtr 1999 | Mar qtr 2000 | June qtr 2000 | Sep qtr 2000 | Dec qtr 1999 to Mar qtr 2000 | Mar qtr 2000 to June qtr 2000 | June qtr 2000 to Sep qtr 2000 |
| | | | | | | | |
| SELECTED INDUSTRIES(c) | | | | | | | |
| Manufacturing | 105.8 | 106.6 | 107.0 | 107.6 | 0.8 | 0.4 | 0.6 |
| Retail trade | 105.7 | 106.0 | 106.5 | 108.0 | 0.3 | 0.5 | 1.4 |
| Transport & storage | 107.6 | 108.0 | n.a. | n.a. | 0.4 | — | — |
| Government administration and defence | 104.7 | 104.8 | 105.4 | 106.8 | 0.1 | 0.6 | 1.3 |
| Education | 107.9 | 108.3 | 108.5 | 110.9 | 0.4 | 0.2 | 2.2 |
| Health and community services | 104.7 | 104.9 | 105.4 | 106.3 | 0.2 | 0.5 | 0.9 |
| All industries(d) | 106.0 | 106.5 | 106.9 | 108.1 | 0.5 | 0.4 | 1.1 |
| SELECTED OCCUPATIONS | | | | | | | |
| Professionals | 106.8 | 107.2 | 107.5 | 109.3 | 0.4 | 0.3 | 1.7 |
| Associate Professionals | 105.9 | 106.4 | 106.9 | 107.9 | 0.5 | 0.5 | 0.9 |
| Tradespersons & related workers | 105.6 | 106.2 | 106.5 | 107.6 | 0.6 | 0.3 | 1.0 |
| Intermediate clerical, sales & service workers | 105.7 | 106.0 | 106.2 | 107.8 | 0.3 | 0.2 | 1.5 |
| Intermediate production & transport workers | 105.8 | 106.3 | 106.8 | 107.8 | 0.5 | 0.5 | 0.9 |
| Elementary clerical, sales & service workers | 108.0 | 108.6 | 109.3 | 109.9 | 0.6 | 0.6 | 0.5 |
| Labourers & related workers | 105.0 | 105.5 | 105.8 | 107.3 | 0.5 | 0.3 | 1.4 |
| All occupations | 106.0 | 106.5 | 106.9 | 108.1 | 0.5 | 0.4 | 1.1 |

(a) Base of each index: September quarter 1997 = 100.0.

(b) These indexes are a measure of quarterly changes in wage and salary costs for employee jobs. They are one of four sets of indexes that together comprise the Wage Cost Index. For explanation of terms and concepts, refer to Wage Cost Index, Australia (Cat. no. 6345.0).

(c) Industry is shown at the ANZSIC division level for selected divisions.

(d) Excludes Agriculture, forestry and fishing.

Source: Unpublished data.

15

SUMMARY OF ANNUAL MOVEMENTS IN WAGES AND PRICES(a)

| | <i>CPI all groups-Hobart(b)</i> | <i>Price index of materials used in house building all groups-Hobart(c)</i> | <i>Price index of materials used in building other than house building all groups-Hobart(c)</i> | <i>Average weekly total earnings, full-time adult employees(d)</i> |
|--------------------------------------|-------------------------------------|---|---|--|
| PERCENTAGE CHANGE FROM PREVIOUS YEAR | | | | |
| 1997-98 | -0.1 | 0.7 | 0.9 | 5.1 |
| 1998-99 | 1.0 | 1.0 | 0.9 | 2.4 |
| 1999-2000 | 1.9 | 1.3 | 0.4 | 2.5 |
| 1998 | | | | |
| September | 1.8 | 1.8 | 1.6 | 3.3 |
| December | 1.2 | 1.4 | 1.2 | 3.3 |
| 1999 | | | | |
| March | 0.5 | 0.7 | 0.7 | 3.4 |
| June | 0.4 | -0.1 | 0.2 | -0.3 |
| September | 0.4 | -0.3 | 0.1 | 0.8 |
| December | 1.1 | 0.2 | -0.2 | 2.3 |
| 2000 | | | | |
| March | 2.6 | 2.0 | 0.6 | 0.6 |
| June | 3.3 | 3.4 | 1.2 | 6.5 |
| September | 6.5 | (e)2.5 | (e)-0.5 | 5.4 |

(a) Weekly award rates of pay collection has been discontinued from June 1997.

(b) See note 5 on page 2 of this issue on the impacts of The New Tax System (TNTS).

(c) Only quarterly data collected from June 1997. Earlier data has been re-compiled from monthly to quarterly.

(d) March, June, September and December data relates to February, May, August and November survey dates as published in 6302.2.

(e) This quarter affected by the removal of the Wholesale Sales Tax from 1 July 2000.

Source: Consumer Price Index, Australia (Cat. no. 6401.0); Price Index of Materials Used in House Building, Six State Capital Cities (Cat. no. 6408.0), (quarterly from June 1997); Price Index of Materials Used in Other than House Building, Six State Capital Cities (Cat. no. 6407.0), (quarterly from June 1997); Average Weekly Earnings, States and Australia (Cat. no. 6302.0).

16

HOUSE PRICE INDEX NUMBERS(a)(b)

| | <i>Established house price index</i> | | <i>Project home price index</i> | |
|------------------|--------------------------------------|--------------------|---------------------------------|--------------------|
| | <i>Index</i> | <i>% change(c)</i> | <i>Index</i> | <i>% change(c)</i> |
| 1997-98 | 125.4 | -2.4 | 123.3 | — |
| 1998-99 | 123.2 | -1.8 | 123.3 | — |
| 1999-2000 | 129.0 | 4.7 | 126.2 | 2.4 |
| 1998 | | | | |
| September | 123.8 | -0.8 | 123.3 | — |
| December | 121.7 | -1.7 | 123.3 | — |
| 1999 | | | | |
| March | 123.7 | 1.6 | 123.3 | — |
| June | 123.6 | -0.1 | 123.3 | — |
| September | 125.3 | 1.4 | 124.0 | 0.6 |
| December | 127.8 | 2.0 | 125.4 | 1.1 |
| 2000 | | | | |
| March | 128.6 | 0.6 | 127.5 | 1.7 |
| June | 134.2 | 4.4 | 127.9 | 0.3 |
| September | 134.3 | 0.1 | (d)140.3 | (d)9.7 |

(a) Base of each Index: 1989-90 = 100.

(b) Used in calculating the mortgage interest charges component of the Consumer Price Index.

(c) Percentage change over previous period.

(d) See note 5 on page 2 of this issue on the impacts of The New Tax System (TNTS) introduced on 1 July 2000.

Source: House Price Indexes: Eight Capital Cities (Cat. no. 6416.0).

Hobart

| | Food | Clothing and Footwear | Housing | Household furnishings, supplies and services | Transportation | Alcohol and tobacco |
|-------------|-------|-----------------------|---------|--|----------------|---------------------|
| 1997 | | | | | | |
| September | 121.0 | 104.8 | 97.7 | 119.7 | 122.2 | 153.6 |
| December | 121.7 | 106.0 | 95.5 | 119.7 | 122.1 | 155.6 |
| 1998 | | | | | | |
| March | 121.7 | 105.5 | 95.3 | 119.4 | 121.7 | 158.0 |
| June | 122.3 | 105.3 | 95.5 | 119.5 | 120.5 | 160.2 |
| September | 124.7 | 105.1 | 95.6 | 120.4 | 120.4 | 159.6 |
| December | 125.0 | 105.7 | 95.4 | 120.8 | 118.6 | 159.1 |
| 1999 | | | | | | |
| March | 125.5 | 104.7 | 95.8 | 119.5 | 118.4 | 161.5 |
| June | 126.8 | 104.6 | 95.9 | 119.4 | 120.4 | 160.0 |
| September | 126.3 | 104.5 | 96.9 | 119.3 | 123.1 | 158.1 |
| December | 127.5 | 103.9 | 97.4 | 119.1 | 123.8 | 163.3 |
| 2000 | | | | | | |
| March | 127.8 | 104.9 | 98.8 | 120.2 | 126.6 | 167.2 |
| June | 129.1 | 105.0 | 99.2 | 121.2 | 129.3 | 169.9 |
| September | 130.9 | 112.8 | 105.5 | 124.5 | 133.3 | 179.8 |

Weighted average of eight capital cities

| | Hobart | | | Weighted average of eight capital cities | | |
|-------------|--------|-----------|-------------------|---|-------|-------------------------------|
| | Health | Education | Index, all groups | % change over previous period, all groups | Index | % change over previous period |
| 1997 | | | | | | |
| September | 164.9 | 182.3 | 120.6 | -0.6 | 119.7 | -0.4 |
| December | 175.7 | 182.3 | 121.2 | 0.5 | 120.0 | 0.3 |
| 1998 | | | | | | |
| March | 178.6 | 190.0 | 121.5 | 0.2 | 120.3 | 0.3 |
| June | 183.0 | 190.0 | 122.0 | 0.4 | 121.0 | 0.6 |
| September | 190.4 | 190.0 | 122.8 | 0.7 | 121.3 | 0.2 |
| December | 187.8 | 190.0 | 122.7 | -0.1 | 121.9 | 0.5 |
| 1999 | | | | | | |
| March | 164.9 | 198.8 | 122.1 | -0.5 | 121.8 | -0.1 |
| June | 165.7 | 198.8 | 122.5 | 0.3 | 122.3 | 0.4 |
| September | 173.3 | 198.8 | 123.3 | 0.7 | 123.4 | 0.9 |
| December | 172.0 | 198.8 | 124.0 | 0.6 | 124.1 | 0.6 |
| 2000 | | | | | | |
| March | 175.1 | 206.2 | 125.3 | 1.0 | 125.2 | 0.9 |
| June | 177.7 | 206.2 | 126.5 | 1.0 | 126.2 | 0.8 |
| September | 178.0 | 206.5 | 131.3 | 3.8 | 130.9 | 3.7 |

(a) Base year: 1989-90 = 100.

(b) Further information on construction of CPI indexes is contained in the bulletin Australian Consumer Price Index Concepts, Sources and Methods (Cat. no. 6461.0).

(c) As a result of the introduction of the 14th Series Australian CPI there have been changes to some groups and restructuring of some others. See Appendix A4 of the September quarter issue of Consumer Price Index, Australia (Cat. no. 6401.0) for more information.

(d) See Note 5 on page 2 of this issue on the impacts of The New Tax System (TNTS) introduced on 1 July 2000.

Source: Consumer Price Index, Australia (Cat. no. 6401.0).

Index numbers for selected major building materials

| | <i>Structural timber</i> | <i>Clay bricks</i> | <i>Ready mixed concrete</i> | <i>Precast concrete products</i> | <i>Steel decking, cladding etc.</i> | <i>Structural steel</i> |
|----------------|--------------------------|--------------------|-----------------------------|----------------------------------|-------------------------------------|-------------------------|
| 1996-97 | 110.3 | 125.3 | 116.2 | 132.2 | 115.0 | 126.2 |
| 1997-98 | 108.9 | 129.0 | 118.0 | 131.5 | 117.8 | 127.2 |
| 1998-99 | 109.1 | 130.8 | 119.5 | 131.6 | 110.8 | 128.0 |
| 1998 | | | | | | |
| June | 112.4 | 129.4 | 119.9 | 131.7 | 114.3 | 127.4 |
| September | 109.4 | 130.2 | 119.2 | 131.7 | 111.3 | 127.7 |
| December | 108.9 | 131.1 | 120.6 | 131.7 | 111.3 | 128.1 |
| 1999 | | | | | | |
| March | 108.9 | 131.1 | 120.4 | 131.5 | 110.3 | 128.1 |
| June | 109.2 | 130.8 | 117.9 | 131.5 | 110.3 | 128.1 |
| September | 108.2 | 126.9 | 119.4 | 131.6 | 113.7 | 128.8 |
| December | 111.7 | 126.9 | 118.0 | 131.6 | 104.6 | 128.8 |
| 2000 | | | | | | |
| March | 116.9 | 130.9 | 117.5 | 131.6 | 110.1 | 128.8 |
| June | 120.7 | 131.6 | 117.5 | 131.6 | 109.8 | 128.8 |
| September(c) | 120.9 | 131.6 | 117.6 | 131.6 | 106.4 | 129.1 |

Index numbers for selected major building materials

| | <i>Reinforcing steel bar, fabric and mesh</i> | <i>Aluminium windows</i> | <i>Fabricated steel products</i> | <i>Builders hardware</i> | <i>Sand and aggregate</i> | <i>Paint and other coatings</i> | <i>Non-ferrous pipes and fittings</i> |
|----------------|---|--------------------------|----------------------------------|--------------------------|---------------------------|---------------------------------|---------------------------------------|
| 1996-97 | 110.7 | 105.9 | 113.3 | 117.2 | 132.7 | 126.6 | 165.2 |
| 1997-98 | 112.7 | 107.2 | 114.7 | 113.7 | 124.5 | 127.3 | 164.3 |
| 1998-99 | 113.4 | 107.3 | 116.0 | 113.4 | 127.9 | 133.3 | 161.2 |
| 1998 | | | | | | | |
| June | 113.4 | 108.4 | 116.1 | 114.0 | 127.5 | 130.7 | 162.6 |
| September | 113.4 | 108.4 | 116.1 | 113.7 | 127.9 | 132.7 | 162.8 |
| December | 113.3 | 106.7 | 116.1 | 113.9 | 127.9 | 133.9 | 160.2 |
| 1999 | | | | | | | |
| March | 113.4 | 106.9 | 116.1 | 114.8 | 127.9 | 134.2 | 161.4 |
| June | 113.4 | 107.0 | 115.6 | 111.3 | 127.9 | 132.5 | 160.2 |
| September | 113.4 | 107.0 | 116.1 | 110.8 | 135.4 | 131.7 | 162.4 |
| December | 110.2 | 107.0 | 113.6 | 114.8 | 139.4 | 133.5 | 166.0 |
| 2000 | | | | | | | |
| March | 109.1 | 109.9 | 113.1 | 120.2 | 150.4 | 135.2 | 167.2 |
| June | 109.1 | 110.1 | 113.1 | 118.1 | 150.9 | 134.2 | 177.0 |
| September(c) | 107.8 | 110.1 | 113.1 | 117.3 | 145.5 | 131.8 | 177.2 |

(a) Base year: 1989-90 = 100.

(b) Index numbers in this table have been recompiled to reflect the change to a quarterly collection basis from June 1997.

(c) This quarter affected by the removal of the Wholesale Sales Tax from 1 July 2000.

| | <i>All electrical materials</i> | | <i>All mechanical services</i> | | <i>All plumbing materials</i> | |
|----------------|---------------------------------|--------------------------------------|--------------------------------|--------------------------------------|-------------------------------|--------------------------------------|
| | <i>Index</i> | <i>% change over previous period</i> | <i>Index</i> | <i>% change over previous period</i> | <i>Index</i> | <i>% change over previous period</i> |
| 1996-97 | 117.4 | -1.0 | 117 | 1.7 | 122.8 | -3.8 |
| 1997-98 | 117.2 | -0.2 | 117 | — | 121.9 | -0.7 |
| 1998-99 | 115.8 | -1.2 | 119 | 1.7 | 124.5 | 2.1 |
| 1998 | | | | | | |
| June | 116.5 | -0.3 | 117.1 | -0.3 | 121 | -0.5 |
| September | 116.1 | -0.3 | 117.8 | 0.6 | 124.9 | 3.2 |
| December | 116.8 | 0.6 | 119.1 | 1.1 | 124.1 | -0.6 |
| 1999 | | | | | | |
| March | 115.2 | -1.4 | 119.4 | 0.3 | 124.4 | 0.2 |
| June | 115.2 | — | 119.5 | 0.1 | 124.5 | 0.1 |
| September | 115.9 | 0.6 | 119.3 | -0.2 | 122.3 | -1.8 |
| December | 117.5 | 1.4 | 119.8 | 0.4 | 126.5 | 3.4 |
| 2000 | | | | | | |
| March | 118.3 | 0.7 | 120.3 | 0.4 | 128 | 1.2 |
| June | 118.7 | 0.3 | 121.9 | 1.3 | 131 | 2.3 |
| September(c) | 115.8 | -2.4 | 117.3 | -3.8 | 129.1 | -1.5 |

| | <i>All groups excluding electrical materials and mechanical services</i> | | <i>All groups</i> | |
|----------------|--|--------------------------------------|-------------------|--------------------------------------|
| | <i>Index</i> | <i>% change over previous period</i> | <i>Index</i> | <i>% change over previous period</i> |
| 1996-97 | 116.8 | 1.1 | 116.3 | 1 |
| 1997-98 | 118 | 1 | 117.4 | 0.9 |
| 1998-99 | 118.8 | 0.7 | 118.5 | 0.9 |
| 1998 | | | | |
| June | 118.9 | 0.6 | 118.1 | 0.3 |
| September | 119.1 | 0.2 | 118.4 | 0.3 |
| December | 119 | -0.1 | 118.6 | 0.2 |
| 1999 | | | | |
| March | 118.8 | -0.2 | 118.5 | -0.1 |
| June | 118.4 | -0.3 | 118.3 | -0.2 |
| September | 118.8 | 0.3 | 118.5 | 0.2 |
| December | 118.4 | -0.3 | 118.4 | -0.1 |
| 2000 | | | | |
| March | 119.3 | 0.8 | 119.2 | 0.7 |
| June | 119.7 | 0.3 | 119.7 | 0.4 |
| September(c) | 118.8 | -0.8 | 117.9 | -1.5 |

(a) Base year: 1989-90 = 100.

(b) Index numbers in this table have been recompiled to reflect the change to a quarterly collection basis from June 1997.

(c) This quarter affected by the removal of the Wholesale Sales Tax from 1 July 2000.

Source: *Price Index of Materials Used in Other than House Building, Six State Capital Cities (Cat. no. 6407.0)*.

| | <i>Dairy products(a)</i> | | | <i>Staff hours worked</i> | |
|------------------|--------------------------|--------------------------|-----------------------|---------------------------------|-----------------------------|
| | <i>Whole milk(b)</i> | <i>Factory butter(c)</i> | <i>Factory cheese</i> | <i>Textile manufacturing(d)</i> | <i>Vegetable preserving</i> |
| | <i>million litres</i> | <i>tonnes</i> | <i>tonnes</i> | <i>'000</i> | <i>'000</i> |
| 1997-98 | 542.8 | 8 745 | 26 835 | 1 125 | 1 128 |
| 1998-99 | 603.4 | 11 546 | 29 973 | 1 061 | 1 084 |
| 1999-2000 | 608.6 | 8 209 | r 33 344 | 1 032 | 1 019 |
| 1999 | | | | | |
| November | 87.1 | 1 508 | 4 054 | 94 | 104 |
| December | 81.6 | 1 562 | 4 714 | 71 | 87 |
| 2000 | | | | | |
| January | 66.8 | 879 | 3 735 | 43 | 60 |
| February | 51.7 | 378 | 3 473 | 96 | 90 |
| March | 47.3 | 608 | 3 804 | 103 | 92 |
| April | 38.0 | 363 | 2 857 | 75 | 88 |
| May | 29.7 | 232 | 983 | 107 | 107 |
| June | 17.5 | 465 | 683 | 83 | 90 |
| July | 10.1 | 226 | 291 | 82 | 80 |
| August | 23.3 | 210 | 989 | r 100 | 97 |
| September | 58.7 | n.y.a. | n.y.a. | 75 | 62 |
| October | n.y.a. | n.y.a. | n.y.a. | 97 | 62 |
| November | n.y.a. | n.y.a. | n.y.a. | 96 | 100 |

| | <i>Refined zinc</i> | <i>Metallurgical refining</i> | <i>Electricity(f)</i> |
|------------------|---------------------|-------------------------------|-----------------------|
| | <i>'000 tonnes</i> | <i>Index(e)</i> | <i>million kW.h</i> |
| 1997-98 | 197.0 | 116.6 | 9 700 |
| 1998-99 | 214.3 | 125.0 | 9 910 |
| 1999-2000 | 231.7 | 133.2 | 10050.0 |
| 1999 | | | |
| November | 19.9 | 130.3 | .. |
| December | 19.3 | 129.6 | (Dec qtr) 2 390 |
| 2000 | | | |
| January | 20.1 | 130.3 | .. |
| February | 18.6 | 126.4 | .. |
| March | 19.6 | 141.2 | (Mar qtr) 2 360 |
| April | 18.7 | 133.8 | .. |
| May | 18.7 | 136.4 | .. |
| June | 18.7 | 137.2 | (June qtr) 2 620 |
| July | 20.6 | 144.0 | .. |
| August | 21.0 | 143.8 | .. |
| September | 18.0 | 134.3 | (Sept qtr) 2 760 |
| October | 20.5 | 145.1 | .. |
| November | 18.5 | 136.2 | .. |

(a) Source: Australian Dairy Corporation.

(b) Includes the whole milk equivalent of farm cream intake.

(c) Includes butter equivalent of butter oil.

(d) Includes spinning, weaving and carpet making. Reported by establishments which manufacture textiles only, or manufacture clothing and textiles in the one plant.

(e) Metallurgical refining index (Base year: 1979-80 = 100.0). Output from selected establishments covering the smelting and refining of ferro-alloys, zinc and aluminium. The weighting pattern is based on the establishments' value added as derived from the 1979-80 manufacturing Census. For multi product establishments, value added was apportioned to products on the basis of gross receipts from each product.

(f) Collected on a quarterly basis as from 1997.

Source: Unpublished data.

20

LIVESTOCK SLAUGHTERING

| | Cattle | | | | | |
|------------------|---------------------------------------|-------------------------|---------------|--------------|--------------|-------------|
| | <i>Bulls, bullocks and steers</i> | <i>Cows and heifers</i> | <i>Calves</i> | <i>Sheep</i> | <i>Lambs</i> | <i>Pigs</i> |
| | '000 | '000 | '000 | '000 | '000 | '000 |
| 1997-98 | 93.4 | 123.6 | 53.9 | 461.0 | 423.3 | 78.1 |
| 1998-99 | 94.8 | 116.3 | 61.0 | 439.9 | 480.1 | 81.2 |
| 1999-2000 | 109.0 | 108.9 | 62.1 | 589.9 | 456.3 | 70.1 |
| 1998 | | | | | | |
| November | 7.0 | 8.6 | 1.0 | 41.3 | 30.5 | 5.3 |
| 1999 | | | | | | |
| November | 8.4 | 7.8 | 0.9 | 45.6 | 31.3 | 4.7 |
| December | 9.6 | 10.1 | 0.2 | 67.5 | 36.5 | 7.2 |
| 2000 | | | | | | |
| January | 8.9 | 8.1 | 0.2 | 55.6 | 38.4 | 4.3 |
| February | 9.3 | 10.1 | 0.2 | 68.0 | 46.0 | 5.3 |
| March | 11.7 | 11.1 | 0.8 | 76.4 | 55.5 | 6.8 |
| April | 8.3 | 8.5 | 1.4 | 53.1 | 32.3 | 4.9 |
| May | 9.0 | 11.6 | 1.7 | 48.2 | 37.5 | 5.7 |
| June | 9.1 | 12.9 | 0.9 | 51.5 | 44.1 | 6.7 |
| July | 7.0 | 6.7 | 1.2 | 23.0 | 36.2 | 5.0 |
| August | 5.7 | 3.7 | 15.2 | 17.9 | 39.1 | 4.8 |
| September | 6.2 | 4.3 | 22.9 | 18.7 | 37.9 | 4.8 |
| October | 5.9 | 5.8 | 5.6 | 24.3 | 32.2 | 4.1 |
| November | 7.1 | 6.9 | 0.9 | 20.7 | 31.0 | 4.0 |

Source: Unpublished data.

21

LIVESTOCK SLAUGHTERING — SEASONALLY ADJUSTED(a) AND TREND(b)

| | Seasonally adjusted | | | Trend | | |
|-------------|--------------------------|------------------------|-------------|--------------------------|------------------------|-------------|
| | <i>Cattle and calves</i> | <i>Sheep and lambs</i> | <i>Pigs</i> | <i>Cattle and calves</i> | <i>Sheep and lambs</i> | <i>Pigs</i> |
| | '000 | '000 | '000 | '000 | '000 | '000 |
| 1998 | | | | | | |
| November | 21.8 | 77.1 | 6.4 | 22.4 | 75.6 | 6.4 |
| 1999 | | | | | | |
| November | 22.1 | 82.2 | 5.7 | 23.3 | 84.7 | 5.8 |
| December | 19.8 | 79.1 | 5.7 | 23.2 | 84.1 | 5.7 |
| 2000 | | | | | | |
| January | 25.7 | 80.9 | 5.6 | 23.3 | 84.3 | 5.7 |
| February | 23.9 | 85.9 | 6.0 | 23.6 | 85.0 | 5.7 |
| March | 26.1 | 93.5 | 5.8 | 23.5 | 85.8 | 5.6 |
| April | 20.1 | 82.4 | 5.4 | 22.9 | 86.5 | 5.5 |
| May | 22.1 | 85.2 | 5.2 | 21.7 | 87.2 | 5.3 |
| June | 22.2 | 92.0 | 5.1 | 20.4 | 86.8 | 5.2 |
| July | 18.6 | 75.3 | 5.1 | 19.4 | 85.2 | 5.0 |
| August | 16.2 | 89.1 | 4.6 | 18.7 | 82.4 | 4.9 |
| September | 19.6 | 84.5 | 5.1 | 18.3 | 78.4 | 4.8 |
| October | 18.3 | 79.2 | 4.9 | 18.0 | 73.7 | 4.7 |
| November | 17.9 | 50.8 | 4.1 | 17.6 | 68.4 | 4.6 |

(a) Seasonally adjusted factors are reviewed annually to take account of each additional year's original data. The results of the review are used to compile revised seasonally adjusted and trend estimates; see Notes page 2.

(b) ABS trend estimates for the most recent months are revised; see Notes page 2.

Source: Unpublished data.

22

MEAT PRODUCTION(a)

| | Beef | Veal | Mutton | Lamb | Pigmeat(b) | Total |
|------------------|--------|--------|--------|--------|------------|--------|
| | tonnes | tonnes | tonnes | tonnes | tonnes | tonnes |
| 1997-98 | 53 061 | 1 148 | 9 840 | 8 072 | 4 915 | 77 042 |
| 1998-99 | 53 273 | 1 242 | 8 725 | 9 223 | 5 241 | 77 701 |
| 1999-2000 | 57 559 | 1 235 | 11 797 | 8 835 | 4 403 | 83 825 |
| 1998 | | | | | | |
| November | 4 124 | 23 | 804 | 581 | 340 | 5 871 |
| 1999 | | | | | | |
| November | 4 348 | 19 | 926 | 601 | 286 | 6 180 |
| December | 5 277 | 6 | 1 414 | 695 | 424 | 7 816 |
| 2000 | | | | | | |
| January | 4 662 | 7 | 1 120 | 731 | 269 | 6 789 |
| February | 5 154 | 7 | 1 364 | 884 | 333 | 7 741 |
| March | 6 091 | 20 | 1 518 | 1 071 | 425 | 9 125 |
| April | 4 455 | 31 | 1 052 | 619 | 308 | 6 465 |
| May | 5 317 | 37 | 949 | 729 | 366 | 7 399 |
| June | 5 529 | 20 | 1 012 | 867 | 436 | 7 863 |
| July | 3 581 | 26 | 445 | 693 | 324 | 5 068 |
| August | 2 528 | 293 | 338 | 771 | 299 | 4 230 |
| September | 2 884 | 444 | 363 | 737 | 304 | 4 733 |
| October | 3 181 | 112 | 478 | 617 | 257 | 4 646 |
| November | 3 908 | 21 | 415 | 595 | 254 | 5 194 |

(a) Carcass weight.

(b) Includes pork used for production of bacon and ham.

Source: Unpublished data.

23

PRINCIPAL MINERAL CONCENTRATES PRODUCED

| | Copper | Iron (pellets) | Lead | Lead-zinc | Tin | Zinc |
|------------------|-------------|----------------|-------------|-------------|-------------|-------------|
| | '000 tonnes | '000 tonnes | '000 tonnes | '000 tonnes | '000 tonnes | '000 tonnes |
| 1997-98 | 109.6 | 820.8 | 84.6 | 26.2 | 16.2 | 335.4 |
| 1998-99 | 113.5 | 1816.1 | 101.8 | 12.6 | 12.5 | 382.3 |
| 1999-2000 | 104.3 | 2068.3 | 98.7 | 7.9 | 14.8 | 311.9 |
| 1998 | | | | | | |
| September | 25.8 | 453.3 | 21.5 | 5.6 | 1.3 | 92.0 |
| December | 29.9 | 478.2 | 26.1 | 3.2 | 4.0 | 95.3 |
| 1999 | | | | | | |
| March | 30.5 | 481.2 | 29.5 | 2.5 | 3.7 | 97.1 |
| June | 27.3 | 403.4 | 24.7 | 1.5 | 3.6 | 98.0 |
| September | 27.5 | 479.5 | 28.4 | 2.7 | 3.9 | 94.8 |
| December | 26.9 | 568.2 | 28.1 | 2.5 | 4.0 | 86.2 |
| 2000 | | | | | | |
| March | 26.2 | 517.7 | 22.4 | 1.4 | 3.3 | 70.4 |
| June | 23.8 | 502.9 | 19.8 | 1.3 | 3.6 | 60.4 |
| September p | 21.6 | 544.2 | 7.7 | - | 3.2 | r 26.8 |

Source: Mineral Resources Tasmania, Department of Infrastructure, Energy and Resources.

| | Tasmanian-grown logs delivered | | | | | Sawn, peeled and sliced timber produced(a) | | | | |
|------------------|--------------------------------|---|---------------------|-----------------------------|-------|--|---|---------------------|-----------------------------|-------|
| | Eucalypts | Hardwoods, excluding eucalypts(b) | Plant- ation(c) | Native soft- woods(d) | Total | Eucalypts | Hardwoods, excluding eucalypts(b) | Plant- ation(c) | Native soft- woods(d) | Total |
| | | '000 m ³ | '000 m ³ | '000 m ³ | | | '000 m ³ | '000 m ³ | '000 m ³ | |
| 1997-98 | 496.8 | 24.3 | 357.7 | 1.6 | 880.3 | 171.1 | 5.3 | 167.3 | 0.4 | 344.2 |
| 1998-99 | 499.9 | 22.6 | 351.9 | 1.0 | 875.4 | 159.7 | 5.1 | 169.7 | 0.3 | 334.8 |
| 1999-2000 | 510.1 | 28.8 | 396.2 | 0.9 | 936.9 | 169.7 | 5.3 | 190.6 | 0.4 | 366.0 |
| 1998 | | | | | | | | | | |
| September | 129.9 | 3.8 | 88.7 | 0.2 | 222.7 | 43.9 | 1.4 | 41.5 | — | 86.8 |
| December | 134.6 | 2.9 | 81.3 | 0.2 | 218.9 | 40.8 | 1.2 | 42.5 | 0.1 | 84.7 |
| 1999 | | | | | | | | | | |
| March | 110.8 | 9.7 | 90.7 | 0.2 | 211.4 | 35.4 | 0.8 | 42.6 | — | 78.9 |
| June | 124.6 | 6.1 | 91.3 | 0.3 | 222.3 | 39.6 | 1.7 | 43.1 | 0.1 | 84.5 |
| September | 136.0 | 6.3 | 109.4 | 0.2 | 252.0 | 46.2 | 1.3 | 49.1 | 0.1 | 96.8 |
| December | 132.5 | 5.1 | 87.8 | 0.2 | 225.6 | 45.8 | 1.5 | 46.5 | 0.1 | 93.9 |
| 2000 | | | | | | | | | | |
| March | 104.3 | 10.0 | 100.7 | 0.4 | 215.3 | 37.8 | 1.3 | 47.8 | 0.1 | 87.0 |
| June | 137.3 | 7.3 | 98.2 | 0.2 | 243.1 | 39.8 | 1.3 | 47.3 | 0.1 | 88.3 |
| September | 130.7 | 5.0 | 103.8 | 0.3 | 239.9 | 42.4 | 1.7 | 46.6 | 0.1 | 90.9 |

(a) Includes plywood, veneer and sliced timber production converted to an equivalent cubic measurement.

(b) Includes blackwood, myrtle, sassafras etc.

(c) Radiata pine.

(d) Includes Huon pine, celery top pine and King William pine.

Source: Unpublished data.

25

CHIPPING AND GRINDING OF WOOD(a)

| | Producing locations(b) | Materials used(c) | | Chipped and ground wood production '000 tonnes green weight |
|------------------|------------------------|-------------------|---------------------|--|
| | | Logs delivered(d) | Sawmill offcuts | |
| | | no. | '000 m ³ | |
| 1997-98 | 28 | 3 998.1 | 457.9 | 4 440.1 |
| 1998-99 | 29 | 3 459.6 | 373.4 | 3 929.9 |
| 1999-2000 | 30 | 4 526.8 | 452.5 | 5 145.3 |
| 1998 | | | | |
| September | 29 | 872.5 | 87.3 | 981.5 |
| December | 29 | 798.3 | 112.0 | 889.5 |
| 1999 | | | | |
| March | 29 | 862.9 | 79.2 | 997.7 |
| June | 29 | 925.9 | 94.9 | 1 061.1 |
| September | 30 | 1 056.8 | 134.1 | 1 225.3 |
| December | 30 | 1 103.8 | 96.4 | 1 207.3 |
| 2000 | | | | |
| March | 30 | 1 152.1 | 104.6 | 1 308.7 |
| June | 30 | 1 214.1 | 117.4 | 1 404.0 |
| September | 31 | 1 259.5 | 104.0 | 1 451.7 |

(a) Both hardwoods and softwoods, separate details are not available.

(b) Capable of producing at end of year or actually producing during quarter.

(c) Data reported by weight, converted to cubic measure by the factor of 0.95 m³ per tonne.

(d) Includes log equivalent of limbwood and billets.

Source: Unpublished data.

26

LOGS DELIVERED FOR MILLING OR CHIPPING

| | Sawmilling and plywood milling | | | Chipping and grinding(a) | | | Total | | |
|------------------|--------------------------------|---------------------|---------------------|--------------------------|---------------------|---------------------|---------------------|---------------------|---------------------|
| | Crown land(b) | Private land | Total | Crown land(b) | Private land | Total | Crown land(b) | Private land | Total |
| | '000 m ³ | '000 m ³ | '000 m ³ | '000 m ³ | '000 m ³ | '000 m ³ | '000 m ³ | '000 m ³ | '000 m ³ |
| 1997-98 | 750.7 | 129.6 | 880.3 | 1 894.9 | 2 103.1 | 3 998.1 | 2 645.7 | 2 232.7 | 4 878.3 |
| 1998-99 | 754.2 | 121.2 | 875.4 | 1 562.6 | 1 897.0 | 3 459.6 | 2 316.7 | 2 018.2 | 4 334.9 |
| 1999-2000 | 834.4 | 101.6 | 935.9 | 2 440.5 | 2 086.3 | 4 526.8 | 3 274.9 | 2 187.8 | 5 462.7 |
| 1998 | | | | | | | | | |
| September | 188.3 | 34.3 | 222.7 | 341.0 | 531.5 | 872.5 | 529.4 | 565.8 | 1 095.2 |
| December | 185.5 | 33.4 | 218.9 | 422.4 | 375.9 | 798.3 | 607.9 | 409.3 | 1 017.2 |
| 1999 | | | | | | | | | |
| March | 184.1 | 27.3 | 211.4 | 367.0 | 495.8 | 862.9 | 551.1 | 523.2 | 1 074.3 |
| June | 196.2 | 26.1 | 222.3 | 432.1 | 493.8 | 925.9 | 628.3 | 519.9 | 1 148.2 |
| September | 221.8 | 30.2 | 252.0 | 554.0 | 502.7 | 1 056.8 | 775.8 | 532.9 | 1 308.7 |
| December | 202.5 | 23.1 | 225.6 | 643.1 | 460.7 | 1 103.8 | 845.6 | 483.8 | 1 329.4 |
| 2000 | | | | | | | | | |
| March | 192.1 | 23.2 | 215.3 | 585.3 | 566.9 | 1 152.1 | 777.3 | 590.1 | 1 367.4 |
| June | 218.0 | 25.1 | 243.1 | 658.1 | 555.9 | 1 214.1 | 876.1 | 581.0 | 1 457.1 |
| September | 219.7 | 20.2 | 239.9 | 729.7 | 529.8 | 1 259.5 | 949.4 | 550.1 | 1 499.4 |

(a) Logs used are generally below sawmilling standard: includes log equivalent of limbwood and billets.

(b) Comprises all areas (including concession areas) from which royalties are payable to Forestry Tasmania.

Source: Unpublished data.

| | | | | | | | <i>Value(e)</i> | | |
|------------------|-----------------------|------------------------------------|---|----------------------|--------------------|---|-------------------------------------|-------|-----------------------|
| | <i>Dwelling units</i> | | | | New dwelling units | Alterations and additions to residential buildings(c) | <i>Non-residential buildings(d)</i> | | Total of all building |
| | New houses | New other residential buildings(a) | Other dwelling units created (conversions etc.) (b) | Total dwelling units | | | Private | Total | |
| no. | no. | no. | no. | \$m | \$m | \$m | \$m | \$m | |
| 1997-98 | 1 419 | 219 | 5 | 1 643 | 142.4 | 38.4 | 82.8 | 125.5 | 306.3 |
| 1998-99 | 1 297 | 104 | 9 | 1 410 | 131.2 | 36.8 | 115.8 | 174.6 | 342.6 |
| 1999-2000 | 1 608 | 230 | 55 | 1 893 | 193.4 | 50.7 | 120.7 | 160.6 | 404.7 |
| 1999 | | | | | | | | | |
| November | 155 | 26 | 2 | 183 | 15.7 | 4.0 | 4.3 | 6.2 | 25.8 |
| December | 160 | 20 | — | 180 | 18.4 | 2.6 | 8.2 | 13.1 | 34.1 |
| 2000 | | | | | | | | | |
| January | 139 | 28 | 13 | 180 | 21.2 | 4.3 | 5.8 | 6.4 | 31.9 |
| February | 135 | 33 | 0 | 168 | 16.4 | 4.3 | 20.7 | 21.4 | 42.2 |
| March | 149 | 14 | 3 | 166 | 17.5 | 4.1 | 7.0 | 9.8 | 31.4 |
| April | 122 | 12 | 2 | 136 | 13.8 | 3.9 | 2.3 | 8.0 | 25.7 |
| May | 159 | 45 | 29 | 233 | 25.7 | 8.0 | 10.7 | 17.1 | 50.8 |
| June | 84 | 4 | 3 | 91 | 10.3 | 4.3 | 6.4 | 16.7 | 31.2 |
| July | 83 | — | 1 | 84 | 7.9 | 2.6 | 4.3 | 7.3 | 17.7 |
| August | 82 | — | 1 | 83 | 8.9 | 4.1 | 4.7 | 10.7 | 23.7 |
| September | 100 | 19 | — | 119 | 12.7 | 2.2 | 21.5 | 23.2 | 38.1 |
| October r | 105 | 16 | — | 121 | 13.5 | 4.5 | 9.5 | 12.6 | 30.7 |
| November | 112 | 4 | — | 116 | 12.2 | 3.5 | 9.6 | 13.1 | 28.8 |

(a) New individual dwelling units (e.g. flats, home units and villa units).

(b) From alterations and additions to residential building, conversions of non-residential building to residential building etc.

(c) Valued at \$10,000 and over. Includes conversions and dwelling units approved as part of alterations and additions or as part of the construction of non-residential building.

(d) Comprises non-residential building (new plus alterations and additions) valued at \$50,000 and over.

(e) Value data from July 2000 reference month onward are recorded inclusive of GST. See Cat. no. 8731.0 or page 2 of this publication for more details.

Source: *Building Approvals, Australia* (Cat. no. 8731.0).

28

SECURED HOUSING COMMITMENTS — ORIGINAL, SEASONALLY ADJUSTED AND TREND

| | Total number of dwellings(a) | | | Total value of commitments(b) | | |
|-------------|------------------------------|---------------------|-------|-------------------------------|---------------------|-------|
| | Original | Seasonally adjusted | Trend | Original | Seasonally adjusted | Trend |
| | no. | no. | no. | \$m | \$m | \$m |
| 1999 | | | | | | |
| November | 923 | 885 | 848 | 76 | 71 | 68 |
| December | 774 | 794 | 825 | 67 | 66 | 67 |
| 2000 | | | | | | |
| January | 634 | 762 | 803 | 53 | 63 | 66 |
| February | 850 | 838 | 798 | 71 | 69 | 66 |
| March | 880 | 794 | 821 | 73 | 65 | 67 |
| April | 751 | 790 | 871 | 61 | 68 | 70 |
| May | 1 135 | 982 | 932 | 87 | 75 | 73 |
| June | 946 | 978 | 989 | 71 | 77 | 76 |
| July | 1 101 | 1 134 | 1 030 | 81 | 82 | 78 |
| August | 1 147 | 1 049 | 1 056 | 86 | 81 | 79 |
| September | 948 | 1 015 | 1 070 | 71 | 75 | 80 |
| October | 1 071 | 1 069 | 1 079 | 79 | 79 | 80 |
| November | 1 174 | 1 093 | 1 078 | 86 | 81 | 80 |

(a) Includes new dwellings, established dwellings and refinancing. Excludes alterations and additions.

(b) Commitment is a firm offer of housing finance. It either has been, or is normally expected to be, accepted. Includes commitments to provide housing finance to employees and commitments accepted and cancelled in the same month. Excludes alterations and additions. Includes refinancing.

Source: *Housing Finance for Owner Occupation, Australia (Cat. no. 5609.0)*.

29

PRIVATE NEW CAPITAL EXPENDITURE BY TYPE OF ASSET(a)(b)(c)

| | Buildings and structures | Equipment, plant and machinery | Total |
|--------------------|--------------------------|--------------------------------|-------|
| | \$m | \$m | \$m |
| 1997-98 | 169 | 477 | 646 |
| 1998-99 | 130 | 345 | 475 |
| 1999-2000 r | 70 | 385 | 456 |
| 1998 | | | |
| September | 40 | 101 | 141 |
| December | 25 | 70 | 95 |
| 1999 | | | |
| March | 30 | 85 | 115 |
| June | 35 | 89 | 124 |
| September | 14 | 83 | 97 |
| December | 15 | 98 | 114 |
| 2000 | | | |
| March | 14 | 74 | 88 |
| June r | 28 | 130 | 157 |
| September | 31 | 95 | 126 |

(a) Estimates based on a sample survey and therefore subject to sampling variability. Covers selected industries only — mining, manufacturing, finance, property and other selected industries.

(b) Current prices.

(c) See Cat. no. 5646.0 on page 2 of this issue on the impacts of The New Tax System (TNTS) introduced on 1 July 2000.

Source: *Private New Capital Expenditure, State Estimates (Cat. no. 5646.0)*.

| | <i>Deposits</i> | | | | |
|-------------|---------------------------------|-------------------------------------|--------------|------------------------------------|-----------------------------------|
| | <i>Current bearing interest</i> | <i>Current not bearing interest</i> | <i>Fixed</i> | <i>Investment savings accounts</i> | <i>Statement savings accounts</i> |
| | <i>\$m</i> | <i>\$m</i> | <i>\$m</i> | <i>\$m</i> | <i>\$m</i> |
| 1999 | | | | | |
| November | 850 | 252 | 1 951 | 604 | 281 |
| December | 870 | 269 | 1 602 | 599 | 283 |
| 2000 | | | | | |
| January | 861 | 260 | 1 098 | 599 | 283 |
| February | 862 | 260 | 1 039 | 595 | 282 |
| March | 878 | 276 | 1 106 | 593 | 283 |
| April | 863 | 282 | 1 113 | 587 | 284 |
| May | 1 088 | 268 | 1 108 | 429 | 249 |
| June | 1 241 | 274 | 1 108 | 299 | 226 |
| July | 1 250 | 264 | 1 202 | 275 | 228 |
| August | 1 280 | 259 | 1 222 | 280 | 243 |
| September | 1 271 | 270 | 1 198 | 281 | 244 |
| October | 1 298 | 279 | 1 228 | 280 | 247 |
| November | 1 270 | 284 | 1 154 | 277 | 249 |

| | <i>Deposits</i> | | | |
|-------------|---|--------------|--------------|-----------------|
| | <i>Passbook/school savings accounts</i> | <i>Other</i> | <i>Total</i> | <i>Loans(b)</i> |
| | <i>\$m</i> | <i>\$m</i> | <i>\$m</i> | <i>\$m</i> |
| 1999 | | | | |
| November | 87 | 84 | 4 109 | 4 984 |
| December | 83 | 84 | 3 792 | 4 962 |
| 2000 | | | | |
| January | 83 | 82 | 3 266 | 4 950 |
| February | 82 | 82 | 3 202 | 5 039 |
| March | 81 | 82 | 3 301 | 5 056 |
| April | 80 | 83 | 3 292 | 5 021 |
| May | 54 | 84 | 3 281 | 5 116 |
| June | 37 | 84 | 3 269 | 5 128 |
| July | 39 | 83 | 3 341 | 5 229 |
| August | 39 | 86 | 3 408 | 5 143 |
| September | 40 | 89 | 3 392 | 5 099 |
| October | 39 | 88 | 3 459 | 5 103 |
| November | 39 | 85 | 3 359 | 5 147 |

(a) Details are the averages of weekly figures for each month. The figures are derived from returns submitted by banks authorised under the Banking Act together with similar returns voluntarily submitted by the State banks; they exclude the Reserve Bank.

(b) Excludes non-resident loans.

Source: Reserve Bank of Australia.

| | <i>Establish- ments</i> | <i>Guest rooms</i> | <i>Bed spaces</i> | <i>Persons employed</i> | <i>Room nights occupied</i> | <i>Room occupancy rate</i> | <i>Guest nights</i> | <i>Bed occupancy rate</i> | <i>Guest arrivals</i> | <i>Takings from accommodation(c)</i> |
|--|-----------------------------|------------------------|-----------------------|-----------------------------|-------------------------------------|------------------------------------|-------------------------|-----------------------------------|---------------------------|--|
| | <i>no.</i> | <i>no.</i> | <i>no.</i> | <i>no.</i> | <i>'000</i> | <i>%</i> | <i>'000</i> | <i>%</i> | <i>'000</i> | <i>\$'000</i> |
| LICENSED HOTELS WITH FACILITIES | | | | | | | | | | |
| 1999 | | | | | | | | | | |
| September qtr | 54 | 2 897 | 7 926 | 2 767 | 110.9 | 41.8 | 177.7 | 24.5 | 95.7 | 9 429 |
| 2000 | | | | | | | | | | |
| July | n.a. | n.a. | n.a. | n.a. | 30.3 | 33.7 | 46.4 | 18.7 | 24.6 | 2 768 |
| August | n.a. | n.a. | n.a. | n.a. | 35.3 | 39.2 | 53.7 | 21.6 | 27.5 | 3 376 |
| September | n.a. | n.a. | n.a. | n.a. | 36.9 | 42.2 | 61.3 | 25.5 | 33.9 | 3 321 |
| September qtr | 54 | 2 909 | 8 023 | 2 842 | 102.5 | 38.3 | 161.4 | 21.9 | 86.1 | 9 465 |
| MOTELS AND GUEST HOUSES WITH FACILITIES | | | | | | | | | | |
| 1999 | | | | | | | | | | |
| September qtr | 51 | 1 751 | 5 409 | 651 | 58.1 | 36.2 | 108.9 | 21.9 | 62.8 | 4 363 |
| 2000 | | | | | | | | | | |
| July | n.a. | n.a. | n.a. | n.a. | 15.7 | 29.0 | 28.7 | 17.0 | 15.8 | 1 311 |
| August | n.a. | n.a. | n.a. | n.a. | 16.5 | 31.4 | 29.9 | 18.3 | 17.0 | 1 345 |
| September | n.a. | n.a. | n.a. | n.a. | 20.3 | 40.1 | 41.2 | 26.0 | 23.2 | 1 702 |
| September qtr | 51 | 1 749 | 5 441 | 665 | 52.6 | 33.4 | 99.8 | 20.3 | 56.0 | 4 359 |
| SERVICED APARTMENTS | | | | | | | | | | |
| 1999 | | | | | | | | | | |
| September qtr | 24 | 857 | 3 395 | 393 | 36.5 | 46.3 | 75.0 | 24.0 | 32.6 | 3 500 |
| 2000 | | | | | | | | | | |
| July | n.a. | n.a. | n.a. | n.a. | 10.8 | 39.7 | 21.9 | 21.2 | 8.8 | 1 138 |
| August | n.a. | n.a. | n.a. | n.a. | 11.1 | 40.9 | 21.4 | 20.7 | 9.2 | 1 164 |
| September | n.a. | n.a. | n.a. | n.a. | 14.0 | 53.3 | 32.5 | 32.6 | 13.8 | 1 459 |
| September qtr | 25 | 876 | 3 330 | 427 | 35.9 | 44.6 | 75.8 | 24.7 | 31.8 | 3 762 |
| TOTAL ESTABLISHMENTS | | | | | | | | | | |
| 1999 | | | | | | | | | | |
| September qtr | 129 | 5 505 | 16 730 | 3 811 | 205.5 | 40.7 | 361.5 | 23.6 | 191.1 | 17 292 |
| 2000 | | | | | | | | | | |
| July | n.a. | n.a. | n.a. | n.a. | 56.8 | 33.1 | 97.0 | 18.6 | 49.2 | 5 218 |
| August | n.a. | n.a. | n.a. | n.a. | 63.0 | 37.0 | 105.0 | 20.4 | 53.8 | 5 885 |
| September | n.a. | n.a. | n.a. | n.a. | 71.2 | 43.4 | 135.0 | 27.1 | 70.9 | 6 483 |
| September qtr | 130 | 5 534 | 16 794 | 3 934 | 191.0 | 37.8 | 337.0 | 22.0 | 173.9 | 17 585 |

(a) Comprising establishments with 15 or more rooms or units. For explanation of terms and concepts refer to Tourist Accommodation, Australia (Cat. no. 8635.0).

(b) For the four quarters of 2000, the scope of the Survey of Tourist Accommodation (STA) has been expanded. Over this period the following accommodation sectors will be covered: hotels, motels, guest houses and serviced apartments with 15 or more rooms; holiday flats, units and houses operated by owners, managers or real estate agents who have sole letting rights to at least 15 flats, units or houses for short term letting; caravan parks with 40 or more powered sites, cabins, etc; and visitor hostels with 25 or more bed spaces.

(c) Takings from accommodation' after 1 July 2000 are recorded inclusive of GST. See Cat. no. 8635.0 or page 2 of this publication for more details.

Source: Tourist Accommodation, Australia (Cat. no. 8635.0). For more detailed information, see Tourist Accommodation, Small Area Data, Tasmania (Cat. no. 8635.6.40.001).

32

NATIONAL PARKS, PERSON ENTRIES(a)

Tasmanian National Park attendance

| | <i>Cradle Mountain(b)</i> <i>(Lake Dove)</i> | <i>Lake St Clair(b)</i> <i>(Cynthia Bay)</i> | <i>Freycinet(b)</i> | <i>Mt Field(b)</i> | <i>Narawntapu(c)</i> <i>(Bakers Beach)</i> | <i>Mole Creek Karst(d)</i> <i>(Marakoopa Cave)</i> | <i>Maria Island(e)</i> <i>(Darlington)</i> |
|------------------|---|---|---------------------|--------------------|---|---|---|
| | <i>no.</i> | <i>no.</i> | <i>no.</i> | <i>no.</i> | <i>no.</i> | <i>no.</i> | <i>no.</i> |
| 1999–2000 | 200 700 | 111 600 | 308 500 | 130 700 | 33 200 | 29 460 | 13 213 |
| 1999 | | | | | | | |
| December | 22 500 | 10 300 | 32 600 | 14 620 | 4 700 | 4 049 | 1 305 |
| 2000 | | | | | | | |
| January | 33 100 | 19 400 | 48 200 | 22 100 | 6 400 | 4 320 | 2 315 |
| February | 22 300 | 14 400 | 33 400 | 16 400 | 3 700 | 2 591 | 1 617 |
| March | 21 800 | 15 000 | 31 700 | 13 500 | 3 300 | 2 750 | 1 642 |
| April | 23 000 | 13 100 | 44 000 | 14 000 | 2 600 | 3 225 | 1 615 |
| May | 8 300 | 5 500 | 21 700 | 5 600 | 1 100 | 1 350 | 603 |
| June | 8 600 | 3 300 | 17 400 | 6 000 | 1 400 | 1 576 | 526 |
| July | 6 600 | 2 800 | 10 000 | 5 200 | 1 000 | 1 023 | 62 |
| August | 7 600 | 2 600 | 10 600 | 6 300 | 1 200 | 1 140 | 313 |
| September | 10 600 | 6 200 | 16 500 | 9 800 | 2 100 | 2 354 | 929 |
| October | 11 400 | 6 900 | 15 100 | 9 200 | r 2 600 | 1 798 | 748 |
| November | 15 000 | 9 400 | 21 700 | 11 000 | 3 600 | 2 454 | 1 224 |
| December | 21 200 | 11 700 | 32 500 | 15 200 | 4 500 | 3 910 | 1 394 |

(a) A 'person entry' occurs whenever a visitor enters a National Park. Measurement occurs at the designated sites in brackets.

(b) Estimated through a combination of traffic and booth counts.

(c) Estimated through traffic counts.

(d) Number of people taken on a guided tour.

(e) The sum of ferry arrivals and estimated plane passengers.

Source: Tasmanian Parks and Wildlife Service, Department of Primary Industries, Water and Environment.

33

TRACKS IN NATIONAL PARKS, WALKER REGISTRATIONS(a)

| | <i>Overland(b)</i> | <i>South Coast(c)</i> | <i>Freycinet(d)</i> | <i>Port Davey(c)</i> | <i>Frenchmans Cap</i> |
|------------------|--------------------|-----------------------|---------------------|----------------------|-----------------------|
| | <i>no.</i> | <i>no.</i> | <i>no.</i> | <i>no.</i> | <i>no.</i> |
| 1999–2000 | 7 240 | 1 011 | 2 784 | 272 | 807 |
| 1999 | | | | | |
| December | 1 440 | 227 | 386 | 99 | 113 |
| 2000 | | | | | |
| January | 1 518 | 328 | 587 | 75 | 218 |
| February | 1 209 | 173 | 335 | 34 | 161 |
| March | 1 039 | 133 | 317 | 26 | 110 |
| April | 704 | 60 | 282 | 25 | 58 |
| May | 111 | 2 | 39 | — | 15 |
| June | 104 | 1 | 65 | — | 20 |
| July | p 33 | 3 | 89 | 2 | 15 |
| August | p 55 | — | 35 | — | 5 |
| September | p 117 | 12 | 163 | 4 | 27 |
| October | p 146 | p 14 | 113 | p 1 | 5 |
| November | p 525 | p 38 | 216 | p 11 | 41 |
| December | p 995 | n.y.a. | 489 | n.y.a. | n.y.a. |

(a) Numbers include only walkers who registered and represented their intention.

(b) Sum of registrations at Cradle Mt and Lake St Clair.

(c) Sum of registrations to walk the length of the track in any direction, irrespective of starting point.

(d) All overnight walkers registered in the park.

Source: Tasmanian Parks and Wildlife Service, Department of Primary Industries, Water and Environment.

| <i>Category A</i> | <i>Passenger vehicles</i> | <i>Other vehicles(b)</i> | <i>Total(excl. motor cycles)</i> | <i>Vehicles registered by vehicle rental businesses(c)</i> | <i>Motor cycles</i> |
|-------------------|---------------------------|--------------------------|----------------------------------|--|---------------------|
| <i>no.</i> | <i>no.</i> | <i>no.</i> | <i>no.</i> | <i>no.</i> | <i>no.</i> |
| 1997-98 | 13 232 | 2 740 | 15 972 | 2 544 | 542 |
| 1998-99 | 12 359 | 2 786 | 15 145 | 1 771 | 568 |
| 1999-2000 | 11 373 | 3 183 | 14 556 | 2 093 | 563 |
| 1999 | | | | | |
| November | 964 | 292 | 1 256 | 151 | 49 |
| December | 1 626 | 273 | 1 899 | 835 | 58 |
| 2000 | | | | | |
| January | 748 | 204 | 952 | 59 | 29 |
| February | 782 | 210 | 992 | 1 | 52 |
| March | 888 | 240 | 1 128 | 10 | 44 |
| April | 704 | 233 | 937 | 19 | 41 |
| May | 786 | 340 | 1 126 | 3 | 74 |
| June | 665 | 394 | 1 059 | 1 | 27 |
| July | 1 001 | 204 | 1 205 | 81 | 47 |
| August | 1 228 | 244 | 1 472 | 209 | 70 |
| September | 1 313 | 232 | 1 545 | 454 | 49 |
| October | 1 028 | 213 | 1 241 | 213 | 47 |
| November | 1 191 | 245 | 1 436 | 173 | 82 |

(a) Includes State and Commonwealth Government owned motor vehicles and other than those belonging to the defence services. Excludes tractors, plant and equipment, caravans and trailers.

(b) Comprises utilities, panel vans, rigid and articulated trucks and other truck type vehicles (i.e. motor vehicles designed for purposes other than freight carrying, e.g. campervans, tow trucks, ambulances and hearses) and buses.

(c) These figures are included in previous columns.

Source: *New Motor Vehicle Registrations, Australia* (Cat. no. 9303.0.40.003) and unpublished data.

| | Seasonally adjusted | | | | | | | Total(c) | |
|--------------------|---------------------|----------------|----------------------------------|--------------------------|-----------------------------|--------------------------|--|----------|--|
| | Original | Food retailing | Clothing and soft good retailing | Household good retailing | Recreational good retailing | Hospitality and services | Change from corresponding month of previous year | | |
| | \$m | \$m | \$m | \$m | \$m | \$m | \$m | % | |
| 1997-98 r | 3 149.4 | 1 351.1 | 186.0 | 321.6 | 215.2 | 434.9 | 3 151.0 | .. | |
| 1998-99 r | 3 170.1 | 1 351.1 | 186.4 | 341.2 | 200.3 | 434.9 | 3 175.0 | .. | |
| 1999-2000 r | 3 278.4 | 1 398.3 | 163.8 | 371.9 | 211.6 | 477.4 | 3 265.0 | .. | |
| 1999 | | | | | | | | | |
| November r | 279.0 | 118.4 | 13.4 | 29.1 | 17.7 | 39.7 | 272.1 | 4.3 | |
| December r | 368.9 | 119.7 | 13.4 | 28.5 | 17.4 | 39.6 | 273.9 | 6.6 | |
| 2000 | | | | | | | | | |
| January r | 260.9 | 115.6 | 13.5 | 31.6 | 18.2 | 41.8 | 269.4 | 0.9 | |
| February r | 257.4 | 118.7 | 13.4 | 29.4 | 17.3 | 41.6 | 270.3 | 0.4 | |
| March r | 272.8 | 118.6 | 12.8 | 30.3 | 16.9 | 42.8 | 271.4 | -2.5 | |
| April r | 256.8 | 114.8 | 12.2 | 32.2 | 17.8 | 40.1 | 269.0 | -0.2 | |
| May r | 258.2 | 113.5 | 12.9 | 31.6 | 17.4 | 39.5 | 267.5 | -0.7 | |
| June r | 264.8 | 113.7 | 14.0 | 37.5 | 17.6 | 38.7 | 277.7 | 2.8 | |
| July r | 247.7 | 116.0 | 12.4 | 31.4 | 16.3 | 39.1 | 264.4 | -3.3 | |
| August r | 261.6 | 116.9 | 13.8 | 33.3 | 16.7 | 36.0 | 271.0 | -1.7 | |
| September r | 264.9 | 119.2 | 14.1 | 32.7 | 17.2 | 39.0 | 276.9 | 1.1 | |
| October r | 274.7 | 121.0 | 13.4 | 32.0 | 17.5 | 39.3 | 277.5 | 2.2 | |
| November | 294.1 | 121.2 | 14.5 | 33.0 | 17.2 | 39.0 | 280.8 | 3.1 | |

(a) Excludes motor vehicles, parts, petrol, etc.

(b) Data from July 2000 reference month onwards are recorded inclusive of GST. The trend series on current price terms has been suspended as at June 2000. See Cat no. 8501.0 and page 2 of this publication for more details.

(c) Includes Department stores and Other retailing.

Source: Retail Trade, Australia (Cat. no. 8501.0).

| | Tasmania | | | | Australia | | | |
|------------------|----------|---|---------|---|-----------|---|------------|---|
| | Imports | Imports change over preceding period | Exports | Exports change over preceding period | Imports | Imports change over preceding period | Exports(b) | Exports change over preceding period |
| | | | | | | | | |
| 1997-98 | 385 | -3 | 2 136 | 25 | 90 684 | 15 | 87 768 | 11 |
| 1998-99 | 407 | 6 | 2 019 | -6 | 97 611 | 8 | 85 991 | -2 |
| 1999-2000 | 440 | 8 | 2 215 | 10 | r 110 078 | 13 | 97 286 | 13 |
| 1999 | | | | | | | | |
| November | 33 | 4 | 155 | -30 | 9 701 | -5 | 8 473 | 6 |
| December | 31 | -6 | 165 | 7 | 8 922 | -8 | 8 375 | -1 |
| 2000 | | | | | | | | |
| January | 35 | 12 | 231 | 40 | 8 110 | -9 | 6 831 | -18 |
| February | 35 | -1 | 185 | -20 | 8 653 | 7 | 8 233 | 21 |
| March | 36 | 3 | 198 | 7 | 9 648 | 12 | 8 812 | 7 |
| April | 33 | -7 | 172 | -14 | 8 004 | -17 | 8 271 | -6 |
| May | 58 | 73 | 287 | 67 | r 10 370 | 30 | r 9 219 | 12 |
| June | 33 | -44 | 175 | -39 | r 10 436 | 1 | r 9 192 | 0 |
| July | 47 | 44 | 165 | -6 | r 9 755 | -7 | r 9 372 | 2 |
| August | 56 | 19 | 180 | 9 | r 10 716 | 10 | 9 373 | 0 |
| September | 34 | -40 | 166 | -8 | r 9 854 | -8 | r 9 788 | 4 |
| October | 37 | 12 | r 197 | r 18 | r 10 948 | 11 | 10 563 | 8 |
| November | 59 | 59 | 281 | 43 | 110 178 | 1 | 10 499 | -1 |

(a) It is difficult to get a complete picture of Tasmania's trade performance as imports recorded by the ABS include only goods imported directly into the State from overseas, and reported by the Australian Customs Service. Many of Tasmania's goods imported for direct consumption, or input into further processing industries, arrive via interstate ports, and are not included in this table.

(b) Includes re-exports

37

MERCHANDISE EXPORTS, BY COUNTRY

| | European Community | | | East Asia | | | | | Total all countries |
|------------------|--------------------------|----------------|--------------------------|-----------|----------|----------|-----------|----------|---------------------|
| | United States of America | United Kingdom | Total European Community | Japan | Korea | Taiwan | Hong Kong | ASEAN(a) | |
| | \$'000 | \$'000 | \$'000 | \$'000 | \$'000 | \$'000 | \$'000 | \$'000 | |
| 1997-98 | 176 175 | 25 063 | 338 791 | 549 048 | 67 801 | 150 405 | 132 551 | 399 472 | 2 136 171 |
| 1998-99 | 235 787 | 28 691 | 278 037 | 466 626 | 101 177 | 150 071 | 152 533 | 353 441 | 2 019 182 |
| 1999-2000 | 202 831 | 19 228 | 309 082 | 489 037 | 133 562 | 207 243 | 201 349 | 383 693 | r 2 214 554 |
| 1999 | | | | | | | | | |
| November | 8 367 | 1 141 | 6 210 | 40 317 | 12 089 | 15 738 | 13 761 | 32 597 | 155 142 |
| December | 14 110 | 364 | 6 495 | 40 126 | 13 507 | 14 772 | 17 715 | 28 969 | 165 338 |
| 2000 | | | | | | | | | |
| January | 15 158 | 1 214 | 76 008 | 37 408 | 9 180 | 16 485 | 17 086 | 29 980 | 230 891 |
| February | 21 256 | 923 | 11 232 | 48 466 | 13 507 | 18 177 | 20 529 | 32 952 | 185 180 |
| March | 14 953 | 1 559 | 12 228 | 37 558 | 14 667 | 17 750 | 22 177 | 48 051 | 198 453 |
| April | 20 607 | 2 088 | 9 102 | 41 176 | 10 164 | 19 499 | 18 893 | 32 636 | 171 716 |
| May | 22 716 | 1 916 | 71 610 | 53 804 | 17 804 | 29 469 | 18 987 | 41 285 | r 286 491 |
| June | 19 426 | 2 096 | 7 506 | 48 785 | 9 834 | 18 454 | 17 196 | 36 134 | 175 231 |
| July | 15 642 | 4 656 | 9 294 | r 37 751 | 9 219 | 12 837 | 21 192 | r 27 640 | r 164 971 |
| August | 20 931 | 1 692 | 5 807 | r 48 357 | 17 828 | 14 881 | 20 077 | r 36 155 | r 180 403 |
| September | r 12 890 | 4 164 | 10 142 | r 30 485 | 11 831 | 22 329 | 25 542 | r 37 754 | r 166 371 |
| October | r 24 613 | 1 391 | r 19 084 | r 44 105 | r 16 723 | r 15 731 | r 9 133 | r 34 807 | r 196 948 |
| November | 12 945 | 7 233 | 12 968 | 43 848 | 17 670 | 24 673 | 21 055 | 36 365 | 280 861 |

(a) ASEAN member countries are: Brunei, Indonesia, Laos, Malaysia, Myanmar, Philippines, Singapore, Thailand and Viet Nam.

| | <i>Meat and meat preparations</i> | <i>Dairy products</i> | <i>Fish, crustaceans and molluscs</i> | <i>Vegetables and fruit</i> | <i>Wood and woodchips</i> | <i>Textile fibres and wastes</i> | <i>Metallic ores and metal scrap</i> |
|------------------|--|-----------------------------|---------------------------------------|-----------------------------|--|--|--------------------------------------|
| | \$'000 | \$'000 | \$'000 | \$'000 | \$'000 | \$'000 | \$'000 |
| 1997-98 | 71 918 | 133 675 | 141 205 | 55 242 | 311 359 | 29 641 | 254 054 |
| 1998-99 | 65 026 | 102 709 | 136 268 | 54 907 | 296 164 | 24 999 | 278 001 |
| 1999-2000 | 88 298 | 64 573 | 145 484 | 44 686 | 303 340 | 22 358 | r 242 584 |
| 1999 | | | | | | | |
| November | 5 977 | 4 494 | 12 775 | 442 | 24 706 | 1 604 | 29 618 |
| December | 7 307 | 3 723 | 16 011 | 422 | 23 389 | 3 913 | 28 970 |
| 2000 | | | | | | | |
| January | 6 296 | 7 366 | 11 677 | 754 | 32 062 | 1 460 | 21 084 |
| February | 8 376 | 5 680 | 11 507 | 3 066 | 31 878 | 1 812 | 14 065 |
| March | 9 595 | 7 726 | 12 692 | 8 108 | 26 189 | 4 519 | 19 320 |
| April | 8 834 | 6 552 | 9 401 | 10 282 | 35 575 | 1 772 | 11 085 |
| May | 11 354 | 9 220 | 13 722 | 9 063 | 32 315 | 592 | r 26 160 |
| June | 7 970 | r 6 579 | 6 236 | 4 420 | 1 344 | 1 094 | 21 483 |
| July | 6 308 | 7 559 | 15 964 | r 4 218 | 3 836 | 1 363 | 20 609 |
| August | 5 830 | 5 267 | 15 700 | r 3 331 | 3 521 | 534 | 12 547 |
| September | r 3 989 | 6 833 | 16 784 | 1 391 | 2 665 | 2 927 | 10 229 |
| October | r 5 035 | r 10 644 | r 11 056 | 969 | r 2 551 | r 2 834 | 23 532 |
| November | 7 348 | 10 600 | 15 811 | 340 | 386 | 2 092 | 14 019 |
| | | | | | | | |
| | <i>Medical and pharmaceutical products</i> | <i>Paper and paperboard</i> | <i>Iron and steel</i> | <i>Non-ferrous metals</i> | <i>Road vehicles and transport equipment</i> | <i>Other and combined confidential items</i> | <i>Total all commodity groups</i> |
| | \$'000 | \$'000 | \$'000 | \$'000 | \$'000 | \$'000 | \$'000 |
| 1997-98 | 34 755 | 21 222 | 76 463 | 557 126 | 280 251 | 169 261 | 2 136 171 |
| 1998-99 | 52 330 | 4 130 | 95 265 | 544 311 | 173 015 | 192 057 | 2 019 182 |
| 1999-2000 | 67 353 | 9 932 | 10 216 | 681 903 | 213 836 | 319 993 | r 2 214 554 |
| 1999 | | | | | | | |
| November | 5 153 | 972 | 60 | 52 096 | 277 | 16 968 | 155 142 |
| December | 2 146 | 1 316 | 2 156 | 51 889 | 50 | 24 046 | 165 338 |
| 2000 | | | | | | | |
| January | 3 367 | 535 | 169 | 55 551 | 72 222 | 18 347 | 230 891 |
| February | 6 425 | 1 704 | 178 | 68 007 | 636 | 31 846 | 185 180 |
| March | 8 343 | 1 518 | 322 | 74 371 | 1 333 | 24 418 | 198 453 |
| April | 8 133 | 773 | 100 | 55 293 | 1 520 | 22 397 | 171 716 |
| May | 6 711 | 1 664 | 694 | 63 632 | 64 934 | 46 429 | r 286 491 |
| June | 5 613 | 596 | 782 | 64 109 | 521 | 54 485 | 175 231 |
| July | 7 800 | 377 | 458 | r 47 490 | 251 | r 48 738 | r 164 971 |
| August | 10 757 | 594 | 234 | r 61 352 | 136 | r 60 599 | r 180 403 |
| September | 7 097 | r 364 | 286 | r 62 659 | 397 | r 50 751 | r 166 371 |
| October | r 10 686 | r 228 | 1 071 | r 61 649 | 1 017 | r 65 677 | r 196 948 |
| November | 12 732 | 310 | 229 | 73 969 | 89 019 | 54 006 | 280 861 |

| | NSW | Vic. | Qld | SA | WA | Tas. | Aust.(a) |
|--|---------|---------|---------|---------|---------|-------|--------------|
| Population | | | | | | | |
| Estimated resident population, June 2000 ('000) p | 6 463.5 | 4 765.9 | 3 566.4 | 1 497.6 | 1 883.9 | 470.4 | 19 157.0 |
| Proportion of Australian population, June 2000 (%) p | 33.7 | 24.9 | 18.6 | 7.8 | 9.8 | 2.5 | 100.0 |
| Population growth rate, 12 months to June 2000 (%) p | 1.0 | 1.2 | 1.7 | 0.4 | 1.4 | -0.1 | 1.2 |
| Labour force | | | | | | | |
| Employment growth, 12 months to December 2000 (trend series) (%) | | | | | | | |
| Males | 1.1 | 4.7 | 1.2 | — | -0.2 | 2.2 | 1.8 |
| Females | 2.6 | 2.1 | 2.3 | 0.1 | 3.1 | 1.8 | 2.3 |
| Persons | 1.8 | 3.5 | 1.7 | 0.1 | 1.2 | 2.0 | 2.0 |
| Unemployment rate (trend series), December 2000 (%) | 5.8 | 6.1 | 7.9 | 7.4 | 6.2 | 8.9 | 6.5 |
| Unemployment growth, 12 months to December 2000 (trend series) (%) | -2.8 | -8.4 | -1.0 | -9.6 | -5.8 | -1.5 | -4.3 |
| Participation rate (trend series), December 2000 (%) | 62.1 | 63.6 | 64.8 | 60.3 | 66.7 | 59.8 | 63.5 |
| Job vacancy rate, November 2000 (%) | 1.7 | 2.1 | 1.0 | 1.0 | 1.2 | 1.1 | 1.6 |
| Working days lost through industrial disputes, 12 months to Sept 2000 (days per '000 employees) | 122 | 78 | 62 | 31 | 81 | 6 | 83 |
| Wages and prices | | | | | | | |
| Average weekly total earnings, full-time adult employees (trend series) August 2000 (\$) | | | | | | | |
| Males | 956.4 | 866.5 | 846.3 | 848.1 | 925.7 | 831.8 | 899.1 |
| Females | 749.8 | 738.1 | 681.0 | 693.4 | 697.0 | 667.1 | 728.0 |
| Persons | 877.4 | 819.8 | 786.4 | 790.9 | 845.7 | 775.9 | 836.4 |
| Average weekly total earnings, full-time adult employees, growth (trend), 12 months to Aug '00 (%) | 4.8 | 4.9 | 6.4 | 6.2 | 5.4 | 5.7 | 5.3 |
| Consumer price index, all groups, annual growth to September qtr 2000 (%) (b) | 6.0 | 6.3 | 5.9 | 5.8 | 5.5 | 6.5 | 6.1 |
| Building | | | | | | | |
| % change in the number of total dwelling units approved (original), | | | | | | | |
| — in the 12 months ended November 2000, over the same period previous year | -21.8 | -5.8 | -1.7 | -2.7 | -20.5 | 10.8 | -12.2 |
| — November 1999 to November 2000 | -29.1 | -31.9 | -31.4 | -33.4 | -52.2 | -36.6 | -34.6 |
| For footnotes see end of table. | | | | | | | ...continued |

| | NSW | Vic. | Qld | SA | WA | Tas. | Aust.(a) |
|---|------|------|------|------|-------|-------|----------|
| Private investment and retail trade | | | | | | | |
| % change in private new capital expenditure, 12 months ended September 2000, over the same period previous year (original) | 7.7 | -5.0 | -3.0 | 4.9 | -24.6 | 12.5 | -4.4 |
| % change in seasonally adjusted estimates turnover of retail establishments, November 2000 (change from corresponding month of the previous year) | 3.9 | — | 4.0 | 5.9 | 0.9 | 3.2 | 3.0 |
| Transport | | | | | | | |
| % change in number of new motor vehicles (excluding motorcycles) registered in the 12 months ended November 2000, over the same period previous year | 0.2 | -0.5 | 9.0 | -1.0 | -3.8 | 1.9 | 1.0 |
| Agriculture | | | | | | | |
| % change in the number of livestock slaughtered 12 months ended November 2000 over the same period previous year (original) | | | | | | | |
| Cattle and calves | -6.3 | -5.3 | 2.9 | 12.9 | -2.7 | -10.6 | -1.7 |
| Sheep and lambs | 4.2 | 14.9 | 9.7 | 10.5 | 17.3 | 3.2 | 10.9 |
| Tourism—room occupancy rates | | | | | | | |
| Hotels, motels & guest houses, & serviced apartments with facilities, September quarter 2000 (%) | 59.7 | 56.2 | 61.8 | 53.5 | 53.9 | 37.8 | 58.4 |
| Australian National and State Accounts | | | | | | | |
| % change in Domestic (State) Final Demand(c), Chain Volume measures (trend series) | | | | | | | |
| Jun qtr 2000 to Sep qtr 2000 | 1.1 | 0.3 | — | — | -0.9 | — | 0.2 |
| Sep qtr 1999 to Sep qtr 2000 | 5.0 | 3.2 | 3.6 | 3.5 | -1.0 | 3.7 | 3.7 |

(a) Australian totals include the ACT and NT, with the exception of Agriculture, which excludes both.

(b) CPI applies to State capitals.

(c) Total of four types of expenditure: Private investment, Private consumption, Government investment, Government consumption.

| | <i>Unit</i> | <i>Greater Hobart and Southern Statistical Divisions</i> | <i>Northern Statistical Division</i> | <i>Mersey-Lyell Statistical Division</i> | <i>Tasmania</i> |
|---|-----------------|--|--|--|-----------------|
| Area, at 30 June 1996 | km ² | 25 521 | 19 935 | 22 507 | 67 964 |
| Population | | | | | |
| Estimated resident population, 30 June 1996 | no. | 230 187 | 134 047 | 110 209 | 474 443 |
| Estimated resident population, 30 June 1999 | no. | 228 855 | 133 016 | 108 390 | 470 261 |
| Births 1999(a) | no. | 2 937 | 1 717 | 1 345 | 6 032 |
| Deaths 1999(a) | no. | 1 823 | 1 111 | 834 | 3 783 |
| Labour force (original), December 2000 | | | | | |
| Total employed | no. | 99 000 | 64 800 | 43 200 | 207 000 |
| Total unemployed | no. | 9 900 | 4 800 | 4 900 | 19 500 |
| Unemployment rate | % | 9.1 | 6.9 | 10.1 | 8.6 |
| Participation rate | % | 60.3 | 63.5 | 59.0 | 60.9 |
| Schools, 1999(b) | | | | | |
| Government | no. | 100 | 57 | 59 | 216 |
| Non-government | no. | 32 | 17 | 16 | 65 |
| School students, 1999(b)(c) | | | | | |
| Government | | | | | |
| Males | no. | 15 529.8 | 9 254.0 | 7 867.3 | 32 651.1 |
| Females | no. | 14 785.4 | 9 291.5 | 7 650.5 | 31 727.4 |
| Total | no. | 30 315.2 | 18 545.5 | 15 517.8 | 64 378.5 |
| Non-government | | | | | |
| Males | no. | 5 866.0 | 2 474 | 2 047 | 10 387.4 |
| Females | no. | 6 170.8 | 2 375.1 | 1 979.7 | 10 525.6 |
| Total | no. | 12 036.8 | 4 849.1 | 4 027.1 | 20 913.0 |
| Educational qualification, 1996 Census(d) | | | | | |
| Bachelor degree or higher(e) | no. | 17 058 | 7 152 | 3 908 | 28 184 |
| Undergraduate diploma | no. | 5 893 | 3 268 | 2 181 | 11 374 |
| Associate diploma | no. | 3 773 | 1 902 | 1 466 | 7 184 |
| Skilled vocational | no. | 16 255 | 10 040 | 8 841 | 35 238 |
| Basic vocational | no. | 4 548 | 2 632 | 2 305 | 9 515 |
| Agriculture | | | | | |
| Establishments with agricultural activity, 1998–99 season | no. | 1 129 | 1 583 | 1 734 | 4 446 |
| Total area of establishments | ha. | 744 493 | 855 423 | 327 938 | 1 927 854 |
| Crops, production, 1998–99 season | | | | | |
| Potatoes | tonnes | 7 019 | 135 661 | 184 802 | 327 482 |
| Onions | tonnes | 949 | 13 527 | 45 996 | 60 471 |
| Apples | tonnes | 46 296 | 4 847 | 11 128 | 62 271 |
| Barley | tonnes | 8 180 | 19 327 | 2 537 | 30 044 |
| Livestock, 1998–99 season | | | | | |
| Beef cattle | no. | 77 760 | 191 042 | 222 641 | 491 443 |
| Dairy cattle | no. | 7 307 | 84 985 | 140 630 | 232 922 |
| Sheep and lambs | no. | 1 664 194 | 1 958 201 | 178 740 | 3 801 135 |
| Pigs | no. | 2 796 | 13 289 | 5 821 | 21 906 |
| Gross value of agricultural production, 1998–99 | \$m | 147 | 249 | 305 | 700 |

For footnotes see end of table.

...continued

| | <i>Unit</i> | <i>Greater Hobart and Southern Statistical Divisions</i> | <i>Northern Statistical Division</i> | <i>Mersey-Lyell Statistical Division</i> | <i>Tasmania</i> |
|--|-------------|--|--|--|-----------------|
| Business locations, September 1998 | | | | | |
| Locations with manufacturing activity | | | | | |
| Less than 20 employees | no. | 424 | 327 | 257 | 1 008 |
| 20 or more employees | no. | 83 | 67 | 48 | 198 |
| Total | no. | 507 | 394 | 305 | 1 206 |
| Locations with retail activity | | | | | |
| Less than 20 employees | no. | 2 046 | 1 346 | 1 133 | 4 525 |
| 20 or more employees | no. | 82 | 43 | 35 | 160 |
| Total | no. | 2 128 | 1 389 | 1 168 | 4 685 |
| Building, 1999–2000 | | | | | |
| Total dwelling units approved | no. | 1 037 | 537 | 319 | 1 893 |
| Value of total residential building approved | \$'000 | 138 309 | 66 632 | 39 163 | 244 104 |
| Value of total building approved | \$'000 | 226 094 | 115 050 | 63 554 | 404 699 |
| Dwellings, Census 1996(d) | | | | | |
| Total dwellings | no. | 98 815 | 57 467 | 45 529 | 201 820 |
| Occupied private dwellings | no. | 85 255 | 49 759 | 40 183 | 175 197 |
| Fully owned | no. | 34 338 | 21 563 | 18 359 | 74 260 |

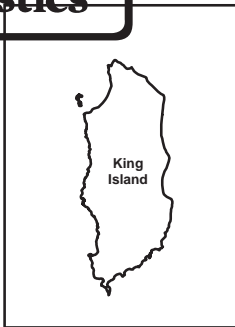
(a) Births and deaths are based on usual residence year of registration. Total Tasmania includes usual residences other than Tasmanian Statistical Divisions.

(b) Source: DETYA and Tasmanian Department of Education.

(c) Full-time equivalent.

(d) Total includes migratory statistical division.

(e) Includes higher degree, postgraduate diploma and bachelor degree.



Statistical Divisions

Statistical Division NORTHERN

Local Government Area Dorset



Based on ASGC 1996
Prepared by: Demography Section, ABS Hobart
© Commonwealth of Australia, 1998

FOR MORE INFORMATION...

- INTERNET* **www.abs.gov.au** the ABS web site is the best place to start for access to summary data from our latest publications, information about the ABS, advice about upcoming releases, our catalogue, and Australia Now—a statistical profile.
- LIBRARY* A range of ABS publications is available from public and tertiary libraries Australia-wide. Contact your nearest library to determine whether it has the ABS statistics you require, or visit our web site for a list of libraries.
- CPI INFOLINE* For current and historical Consumer Price Index data, call 1902 981 074 (call cost 77c per minute).
- DIAL-A-STATISTIC* For the latest figures for National Accounts, Balance of Payments, Labour Force, Average Weekly Earnings, Estimated Resident Population and the Consumer Price Index call 1900 986 400 (call cost 77c per minute).

INFORMATION SERVICE

Data which have been published and can be provided within five minutes are free of charge. Our information consultants can also help you to access the full range of ABS information—ABS user-pays services can be tailored to your needs, time frame and budget. Publications may be purchased. Specialists are on hand to help you with analytical or methodological advice.

- PHONE* **1300 135 070**
- EMAIL* **client.services@abs.gov.au**
- FAX* 1300 135 211
- POST* Client Services, ABS, GPO Box 796, Sydney 1041

WHY NOT SUBSCRIBE?

ABS subscription services provide regular, convenient and prompt deliveries of ABS publications and products as they are released. Email delivery of monthly and quarterly publications is available.

- PHONE* 1300 366 323
- EMAIL* subscriptions@abs.gov.au
- FAX* 03 9615 7848
- POST* Subscription Services, ABS, GPO Box 2796Y, Melbourne 3001



2130360002012
ISSN 1034-1803

RRP \$20.00